



Perfecting the Air



OFFICE | HOTEL | HOME





## CONNECTABLE DEVICES

Various types of equipment in a building can be controlled by a single controller.

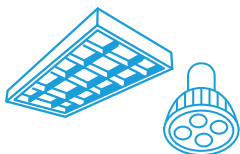
### Individual Air-conditioning Control

From VRV to SkyAir to Split Units, conveniently manage all air-conditioning needs with flexible and precise control when connected to Reiri.



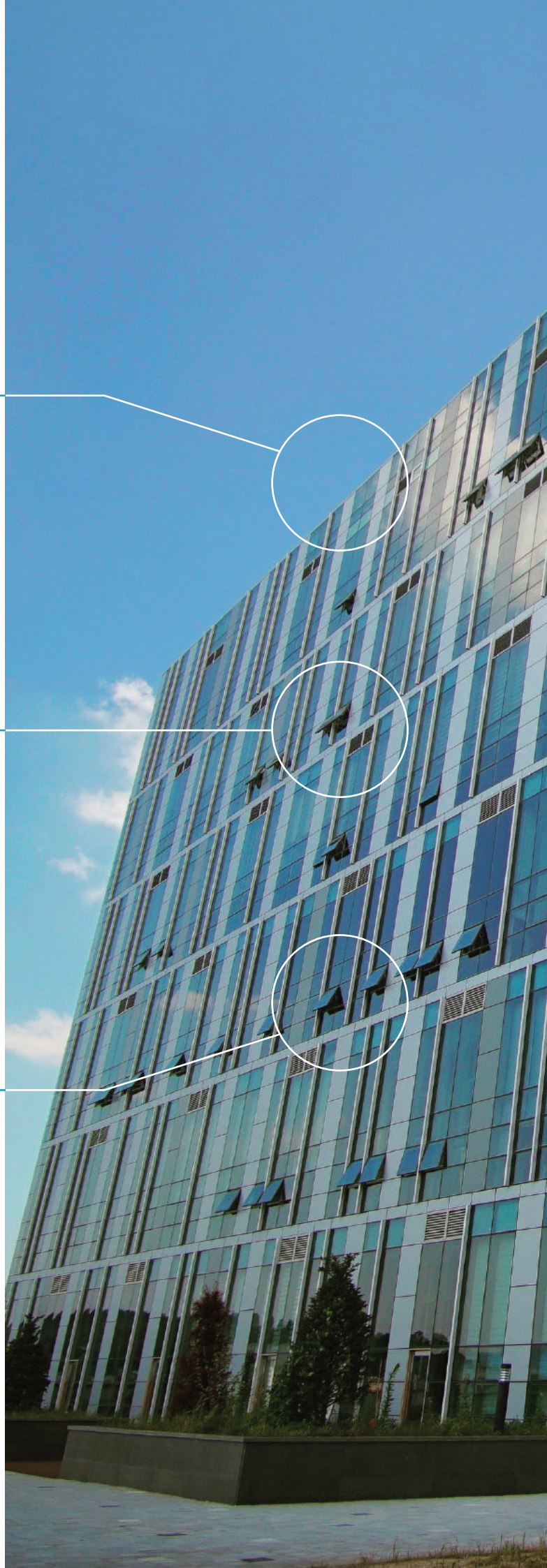
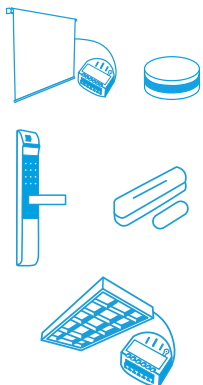
### Lighting Control **DALI Compatible**

Monitor and control DALI-compatible LED lighting systems from a single controller, with enhanced automation through interlocking functions with air-conditioners and other connectable devices.



### Smart Devices

Connect to a wide variety of smart devices, ranging from IP cameras to locks and sensors, and access all of them from just one Reiri app.





## BENEFITS OF REIRI

### Energy Saving

By automating air-conditioning and lighting controls through available functions such as Scheduling and Interlocking, energy consumption is greatly minimized while maximising comfort and efficiency.

### Energy and Cost Management

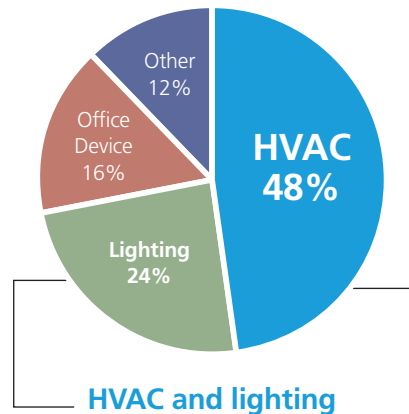
Easily monitor and analyse energy consumption with data trend graphs, reports and even real-time energy monitoring display. Tenant billing management is also available for effective cost management.

### Integration Capabilities

Reiri is able to integrate and connect to various sensors and smart devices, thus making it the ideal all-in-one platform to monitor and control every room's indoor environment, such as temperature, humidity, indoor air quality and illuminance.

Energy-efficient control of air-conditioning and lighting is the key to cutting energy costs.

Electricity consumption ratio in typical office buildings.



**HVAC and lighting account for 72%**

Source: Agency for Natural Resources and Energy, Government of Japan

# Energy Saving

## SCHEDULE

The requirements for every air-conditioning system greatly depend on each building, especially if there are different tenants occupying the same building. With so many different requirements due to different tenants' operating hours and preferences, it would be difficult to manage the operations of every lighting and air-conditioning unit.

Reiri has a Scheduling function that is ideal for home and building owners to manage their systems effectively. With this function, users can programme desired devices to automatically operate according to specific operation days, time and setpoints. This automation control provides great convenience and improves energy savings.

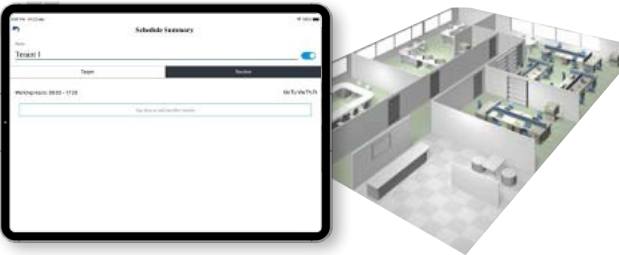
For example, different floors of the same building would have different operating hours due to different occupants. With Reiri's Scheduling function, the different operating hours are saved and various utilities and devices will be automatically



switched on/off accordingly throughout the week. This eliminates energy wastage and allows greater convenience to building owners and facility managers.

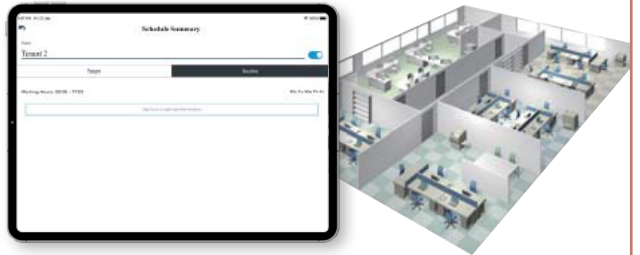
### Floor 1

**Working days:** Mon - Fri  
**Working hours:** 09:00 - 17:30  
**Setpoint:** 24°C.



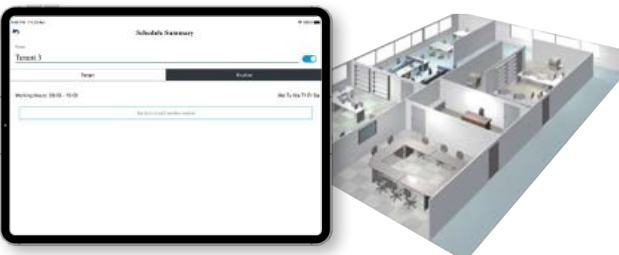
### Floor 2

**Working days:** Mon - Fri  
**Working hours:** 08:00 - 17:00  
**Setpoint:** 22°C.



### Floor 3

**Working days:** Mon - Sat  
**Working hours:** 08:00 - 19:00  
**Setpoint:** 25°C.



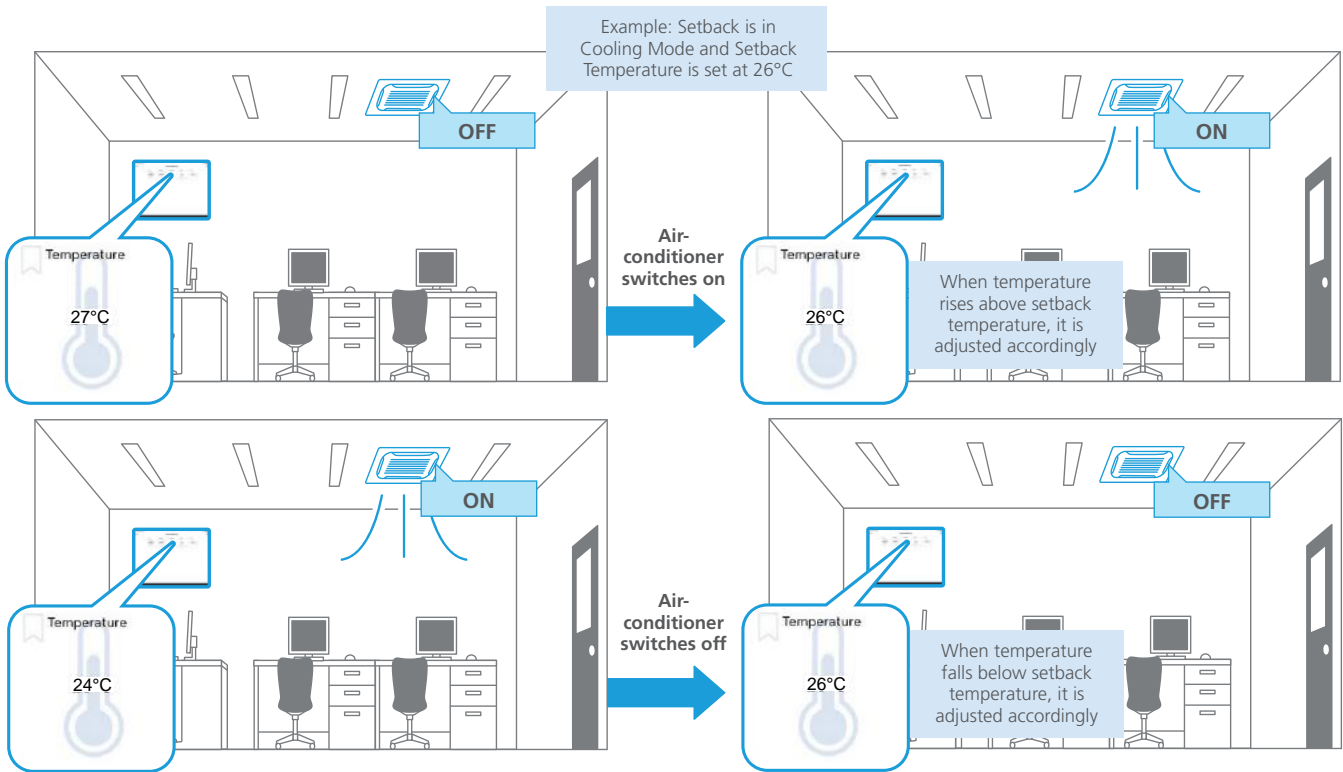
### Floor 4

**Working days:** Mon - Sun  
**Working hours:** 07:00 - 23:00  
**Setpoint:** 25°C.



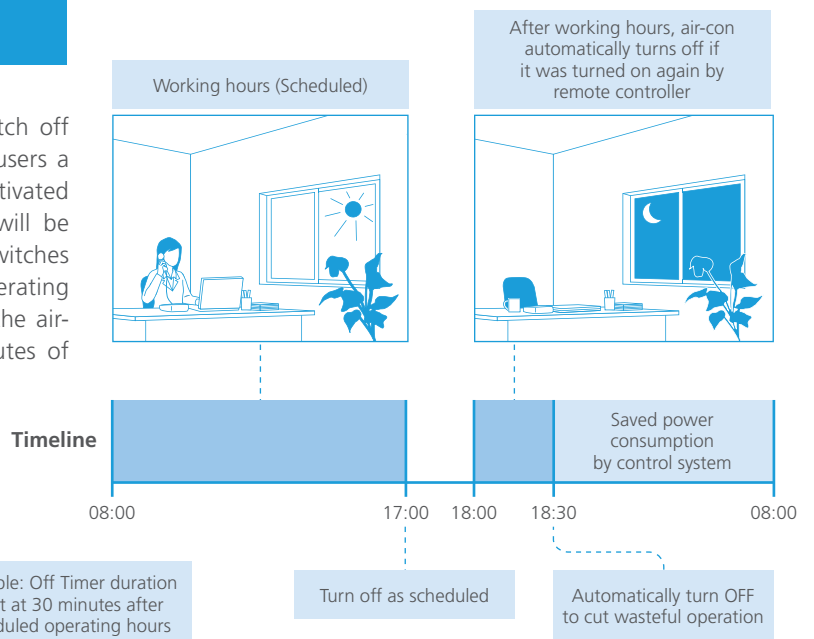
## SETBACK

The Setback function allows users to set their preferred room temperature and enables the air-conditioner to automatically switch on or off to maintain the desired room temperature when no one is in the room. This automatic control conserves energy without compromising on comfort.



## OFF TIMER

The Off Timer function enables air-conditioners to switch off automatically after a set period of time, hence giving users a peace of mind. For example, the Off Timer can be activated after office hours to ensure that the air-conditioner will be automatically switched off in the event that someone switches it on again via the remote controller after scheduled operating hours. If the Off Timer duration is set at 30 minutes, the air-conditioner will automatically switch off after 30 minutes of being on. This greatly helps to prevent energy wastage.



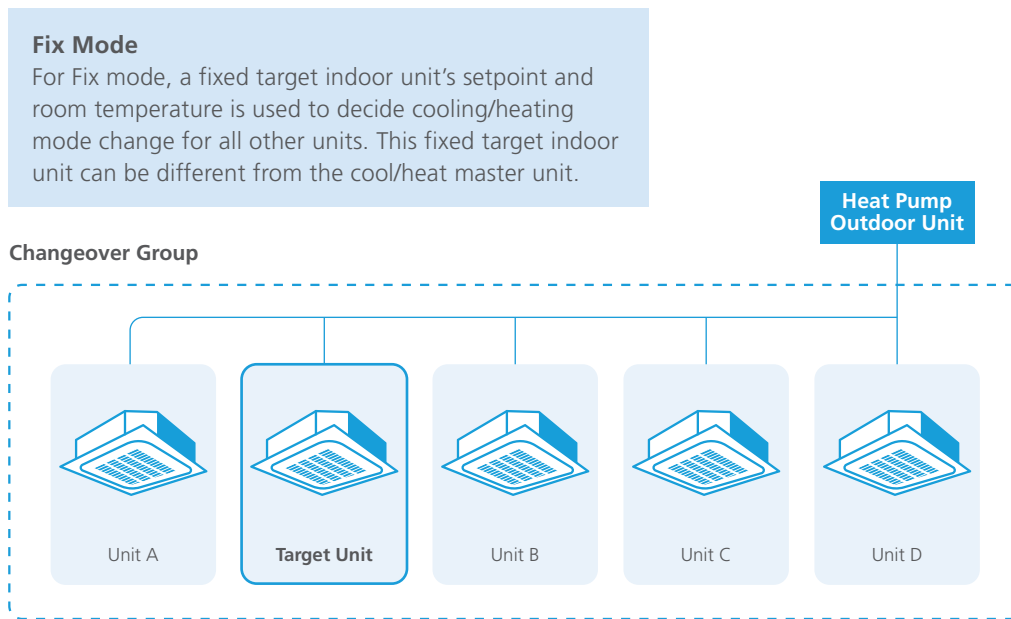
## AUTOMATIC CHANGEOVER

When automatic changeover is enabled, cooling and heating operations of each room will automatically be changed based on setpoint and room temperature. This function operates a group of indoor units to change cooling/heating mode automatically at the same time and can register up to 100 groups. In the case of heat pump/heat recovery VRV, the group will consist of all indoor units of the VRV system.

Generally, if room temperature is above cool setpoint and indoor units are in heating mode, operation mode will be automatically

changed to cooling mode. If room temperature is below heat setpoint and indoor units are in cooling mode, operation mode will be automatically changed to heating mode.

There is also a Guard Timer function which prevents the automatic changeover from activating too frequently in case the room temperature keeps fluctuating above and below the setpoint.



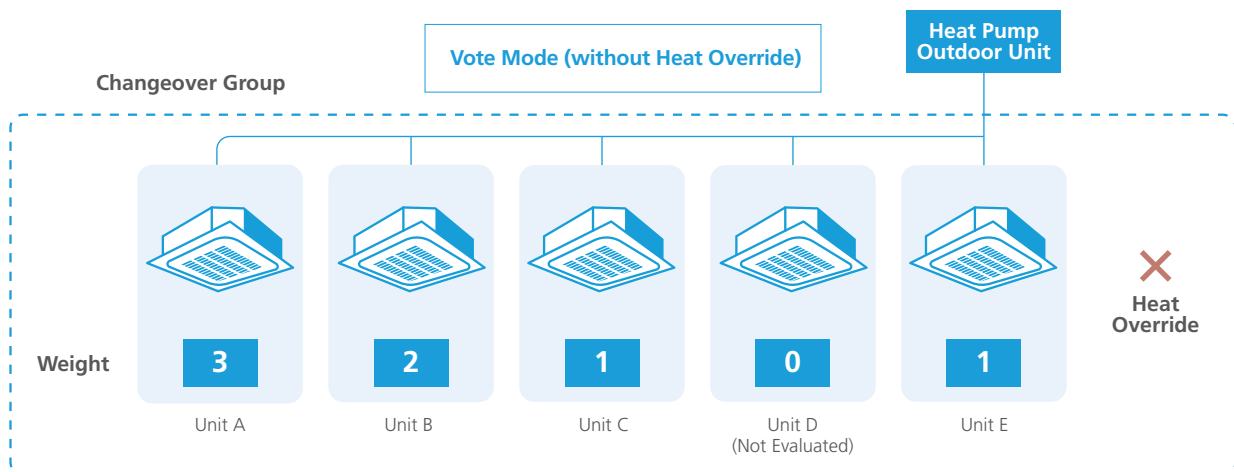
Example: Residential Application



- During the day, the air-conditioning units in a household are in cooling mode.
- At night, the environment becomes cooler and temperature falls.
- When the room temperature falls below the heat setpoint temperature of the target unit, cooling mode is automatically changed to heating mode.
- The rest of the units in the other rooms will also automatically change to heating mode, following the target unit.

### Vote Mode

For Vote mode, each indoor unit in a group will be assigned weight (from 0 to 3) which will then be used to decide cool/heat change based on each unit's setpoint and room temperature. This mode also includes a Heat Override function.



### Example: Residential Application



- In Vote Mode, there is no target unit to 'follow'.
- The higher the weight, the more likely the air-conditioning unit will affect the automatic changeover outcome.
- The weights and the differences between room and setpoint temperatures will be taken into consideration for the heating/cooling mode changeover.
- For example, Units A and B require cooling while Units C and E require heating. However, as Units A and B have higher weightage, all units will automatically change to cooling mode instead.
- When Heat Override is switched on, the air-conditioning units will automatically change to heating mode regardless of the weighted outcome.

# Energy and Cost Management

## DATA AND TREND VISUALIZATION

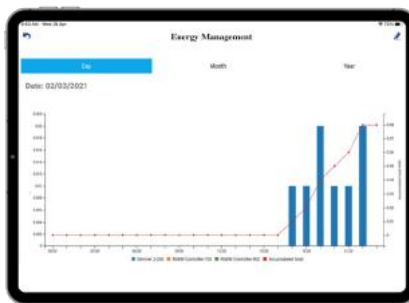
Energy and water consumption data will be captured and displayed in user-friendly graphs. Users are able to select desired devices and parameters to monitor energy and water consumption and ensure effective energy management.

In addition, indoor air quality can also be monitored via trend graphs for indoor environmental changes such as humidity, CO<sub>2</sub> and PM2.5 levels.

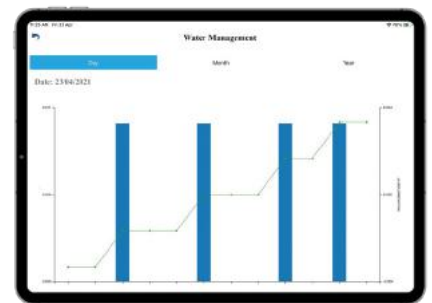
Trend Graph



Energy Management



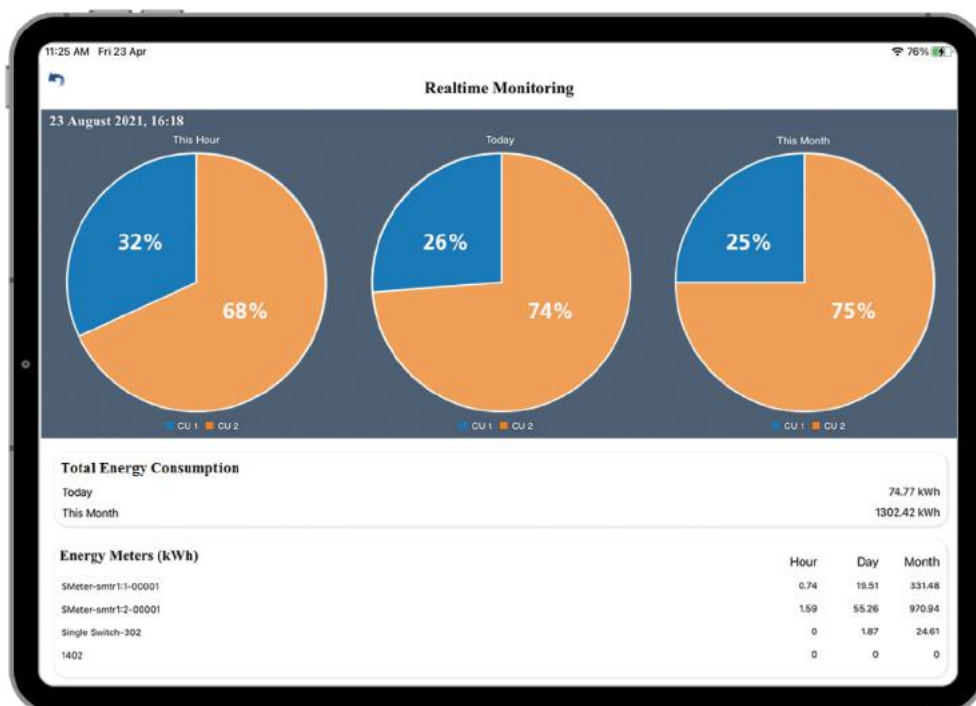
Water Management



## REAL TIME ENERGY DISPLAY

Users can monitor energy and water consumption in real-time and take necessary precautions swiftly, hence enhancing effective energy management.

Total Energy Consumption



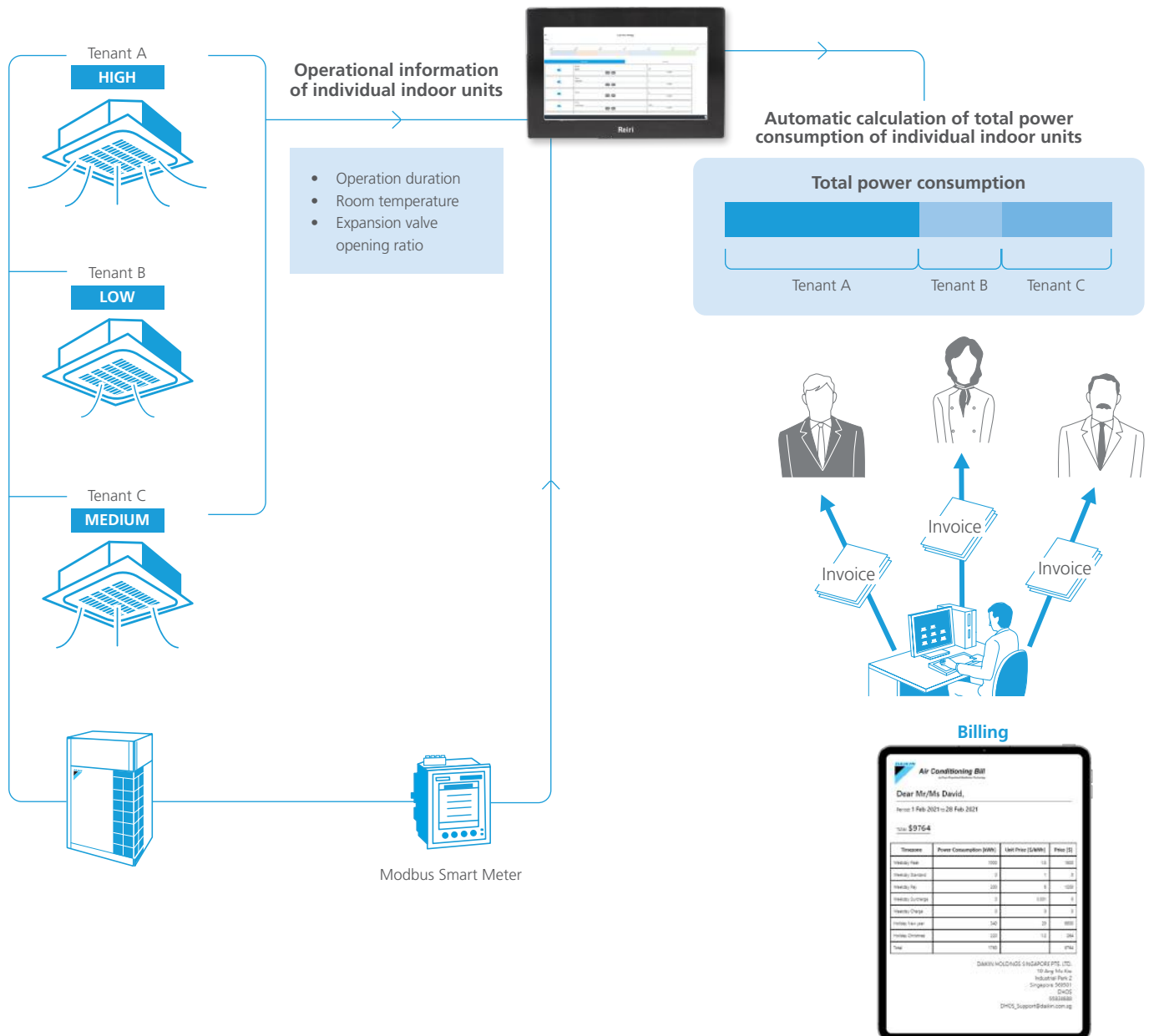


## POWER PROPORTIONAL DISTRIBUTION (PPD) AND PPD BILLING

The PPD function accurately calculates indoor unit power consumption from outdoor unit power consumption divided by each indoor unit's operation information. This data is utilised to calculate air-conditioning usage fees for respective tenants in a building and is also useful for energy management. Building owners are also able to configure price settings for different timings accordingly.

**It is easy to export PPD data.**  
PPD data can be exported in CSV format to any PC to be easily managed and analysed.

As such, this function is able to keep track of power distribution for each indoor unit and perform air-conditioning billing calculations swiftly and automatically.

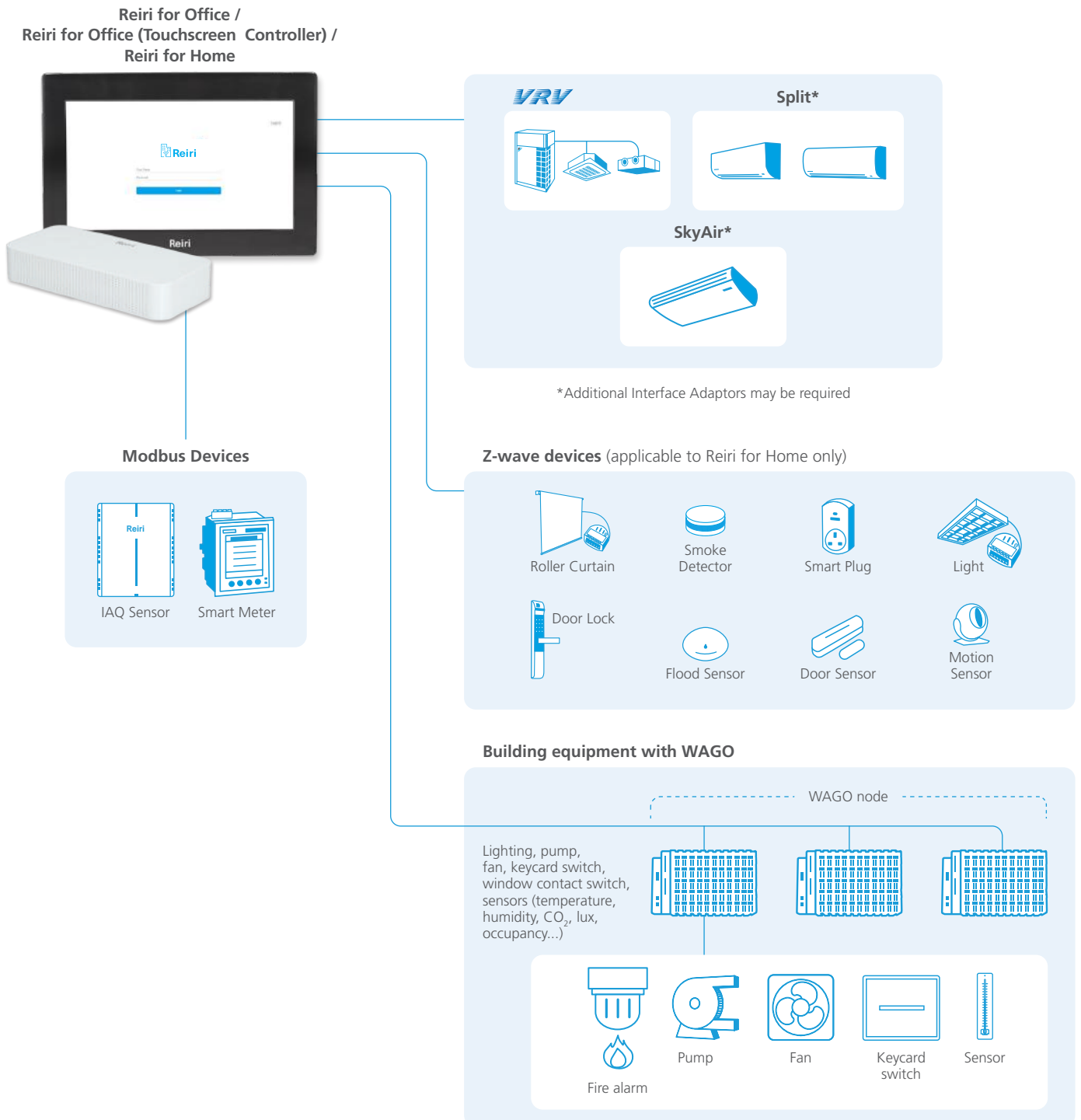


# Integration Capabilities

CONNECT WITH MODBUS, Z-WAVE DEVICES AND VOICE COMMAND

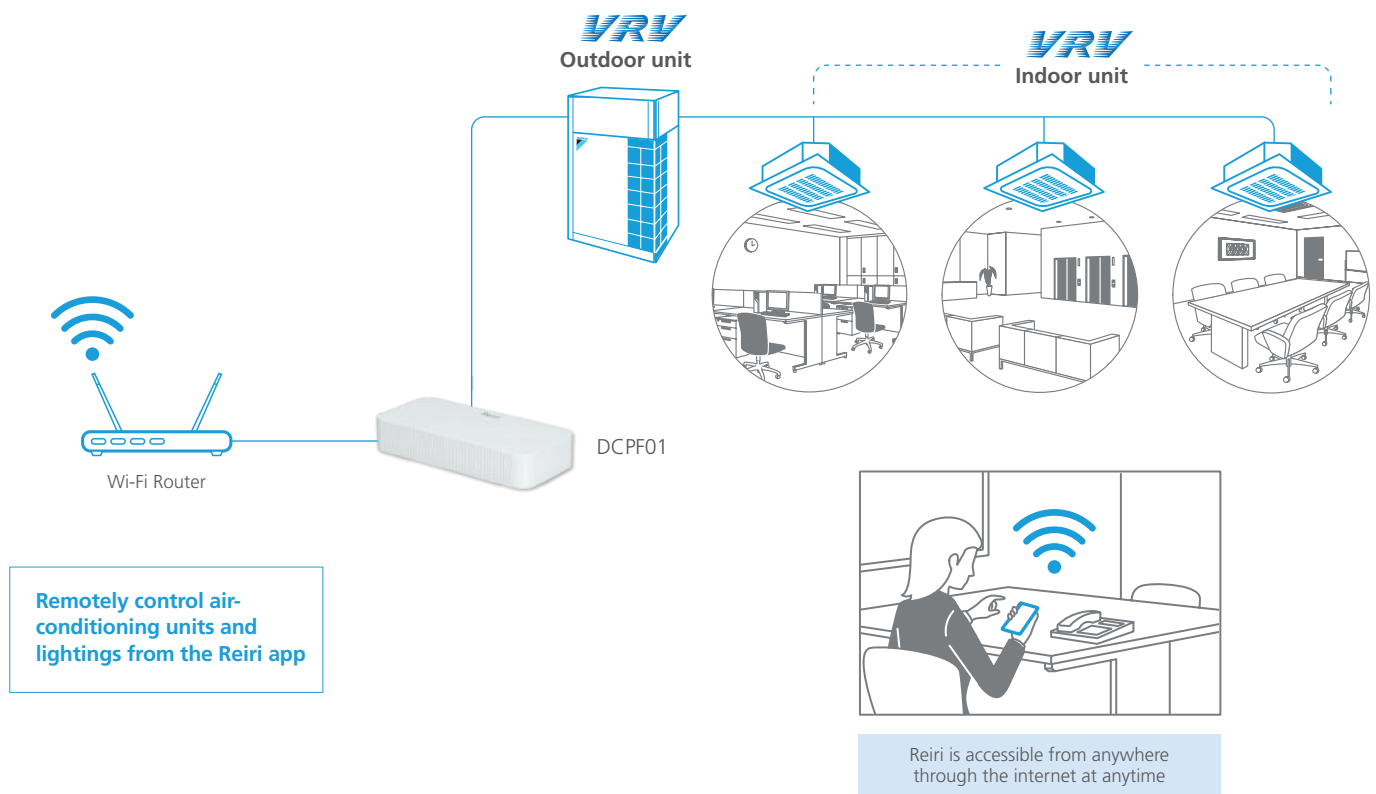
In addition to VRV systems, Reiri can also connect to Split and SkyAir units, making it the ultimate smart air-conditioning control. Depending on the building type, Reiri is also able to

integrate with other building equipment with WAGO I/O modules and Modbus devices, and also allow wireless connections to Z-Wave devices and even voice command assistants such as Google Home.



## CONTROL EVERYTHING FROM JUST ONE REIRI APP

Users can monitor and control all connected air-conditioners and smart devices from the Reiri app on their smartphones, tablets or PCs as long as there is internet connection. With everything conveniently accessible from a single app, users can enjoy greater convenience and energy savings.



## COMPLIANT WITH CYBER-SECURITY STANDARD (EN303645)

Reiri has achieved the EN 303 645 certification, which guarantees a safe and reliable platform for users regardless of location. Privacy and security are of the utmost importance and all data will be securely stored accordingly.





# Reiri for Office



Reiri for Office is the ideal building management solution for all sizes of commercial buildings, especially for small to medium-sized buildings, regardless of location. This smart building solution provides affordable and scalable building control and energy management, allowing users greater control and automation of building utilities such as air-conditioning and lighting, and to monitor and manage energy performance and indoor air quality.

## PRODUCT LINE-UP



Flagship model  
**Reiri for Office**  
**Touchscreen Controller**  
 DCPF04



**Reiri for Office**  
 Controller Extension  
 DCPF01



**Reiri for Office**  
 Controller Extension  
 DCPF05



**Reiri for Office**  
 Multisite Extension  
 DCPF10

Expanded  
 Features

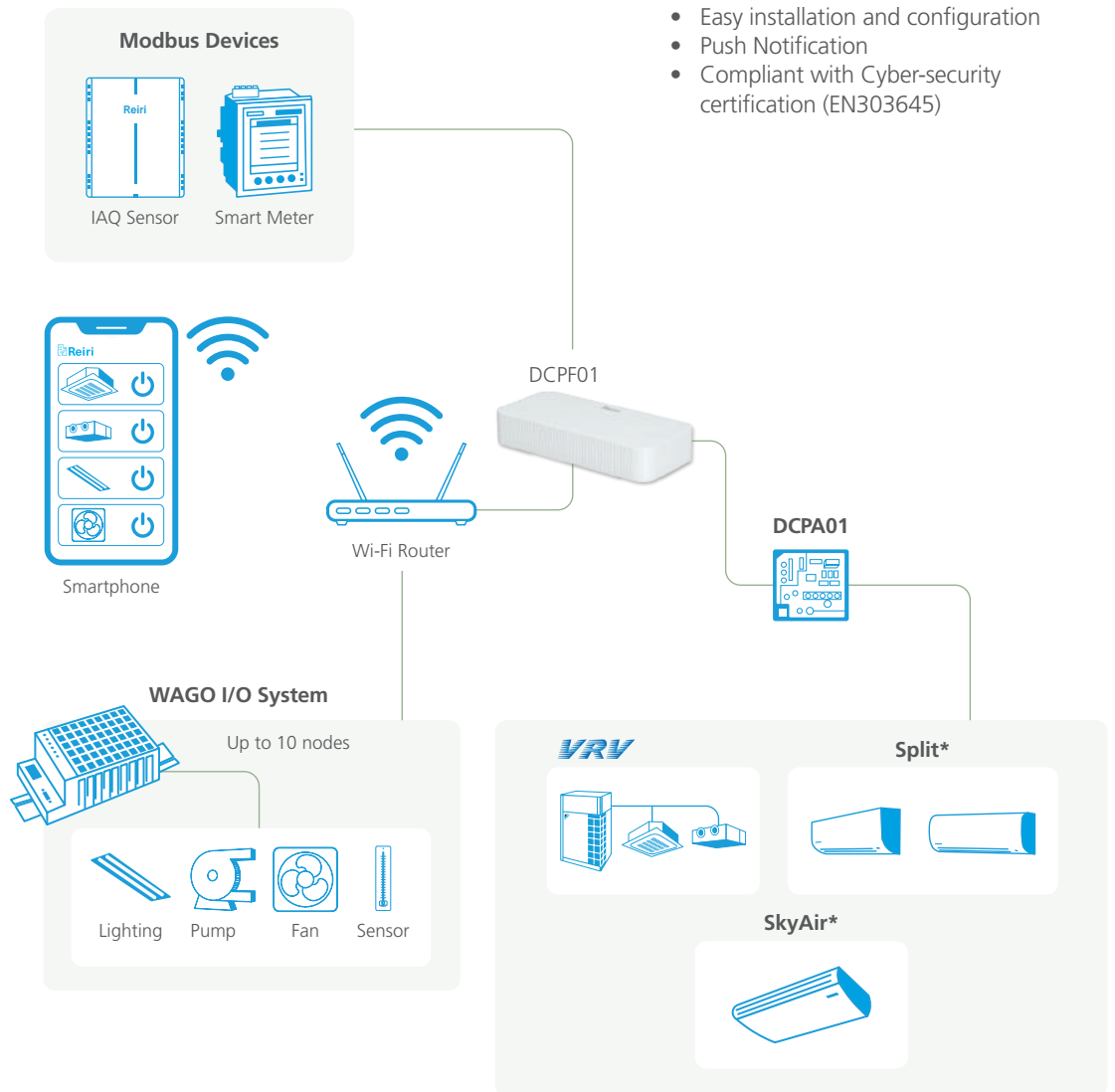


# Reiri for Office

A simple office building solution with a secured, cloud-enabled platform, allowing greater ease of control and comfort while being energy-efficient.

## FEATURES

- Energy Management
- IAQ Management
- Mobile Control of Air-conditioning Units
- Automatic Control
- Scalability
- User-friendly App Interface
- Complete control of all connected devices
- Easy installation and configuration
- Push Notification
- Compliant with Cyber-security certification (EN303645)



\*Additional Interface Adaptors may be required

## SPECIFICATIONS (SOFTWARE)

Category	Functions	Description	
Monitoring and Control Functions	Management points	Maximum number of management point: 500	
	Groups	Maximum number of groups: 100	
	Monitoring Screen	Icon View	Icons show the operation status of equipment
		Layout View	Maximum 50 screen can be registered; Background image size should be less than 512kB
	Remote Control Prohibition	Individually prohibit operation of each local remote-control function	
Setpoint Range Limitation	To limit setpoint range for each indoor unit management point		
Automation Control Functions	Automatic changeover	Number of changeover groups: 100	
	Off Timer	Off timer duration can set from 5 mins to 12 hrs with every 5min interval	
	Setback	Setback setpoint can be selected within 24-35°C in cooling mode and 10-20°C in heating mode.	
	Scene	Number of programmes: 100 Up to 20 actions can be registered per pattern.	
	Schedule	Weekly Schedule	Up to 300 patterns (including yearly calendar) can be set
		Yearly Calendar	A pattern set as special day calendar has higher priority than a pattern which is set as day of a week.
Interlock	Number of programmes: 100 Up to 10 management points can be registered as activation condition. The delay timer of execution condition can be set within 0-60 mins after the activation conditions are satisfied.		
Data Management	History	Management point operation, management point status change, management point error/alert message, function execution and system information are recorded for one year.	
	Report*	Operation data (latest information and operation report) and error report on daily/monthly basis.	
	Trend Graph*	Chart on the environmental changes (e.g. Temperature, Humidity or CO <sub>2</sub> levels) along different points of intervals (6h/12h/24h/48h/7 days/specific period within 7 days).	
	Energy Graph*	Bar chart on energy and other meter value, up to 4 energy categories excluding the recycled category.	
	Real Time Energy Display	Hourly/Daily/Monthly real time energy consumption status on screen.	
IAQ Monitoring	To monitor the daily IAQ level (Temperature, Humidity, CO <sub>2</sub> , PM2.5, TVOC) in a room against the preset threshold. Up to 6 management points in 50 rooms each can be monitored.		
Multi-tenant Management <sup>^</sup>	Power Proportional Distribution (P.P.D.)*	Power Proportional Distribution results available at 60 min interval. Power consumption data for cooling and heating mode are available.	
	P.P.D. Billing	Generate Bill for individual tenants by using P.P.D. data, up to 256 tenants with maximum 256 indoor units registered under each tenant. Number of electricity price variation in a day: 5 time zones can be set with different currency. The system supports data output in CSV format, and printout function.	
System Setting	Account Management	Access through mobile application/ Windows App. Up to 80 accounts (Admin and User account) can be registered. Screens and operation accessible to general users can be restricted by admin account	
	Security	LAN communication: AES-128-CBC with RSA 2048 Internet communication: TLS 1.2 Account password storage: SHA256 hashing and AES-128-CBC together with other account information Device login password storage: AES-128-CBC	
	Supported languages	English, Spanish, Portuguese, Simplified Chinese, Traditional Chinese, Vietnamese, Bahasa (Indonesia), Thai	
	Notification	Push notification in cases: 1) Error/alert detected 2) Specified management point started 3) Version update messages	
	Email Alert	Malfunction Alert will be sent to preset email account	

\*The system supports data output in CSV format.

<sup>^</sup>Smart Meter required.

## OPTIONAL ACCESSORIES

### A/C CONNECTION HARDWARE

Type	Model	Item	Remarks
Controller	DCPF05	Reiri for Office (Controller Extension)	Office Building Extension Controller
	DCPF10	Reiri for Office (Multisite Extension)	Office Building Multisite Controller
A/C Connection Interface Adaptor	DCPA01	Adaptor for Reiri	Up to 64 indoor units can be managed
	DCM601B51	The intelligent Touch Manager (iTM)	HTTP interface software for iTM (DCM007A51) is required
	DCS601C71	The intelligent Touch Controller (iTC)	HTTP interface software for iTC (DCS007A51) is required
	BRP072B42	Daikin Mobile Controller Adaptor (for RA units)	For individual RA Indoor Unit
	BRP072C42	Daikin Mobile Controller Adaptor (for RA units)	For individual RA Indoor Unit
	BRP072C42-1	Daikin Mobile Controller Adaptor (for SA units)	For individual SA Indoor unit
	-	DAMA Interface Adaptor (NetPro Dual)	For individual DAMA AC unit

### OPTIONAL SOFTWARE

Type	Model	Item	Remarks
Controller Software	DCPN001	Commercial Automatic Control	Set back, Scene, Interlock Automatic Changeover functions for individual controller
	DCPN002	Commercial Data Analytics	Operation Report, Error Report; Trend Graph, Energy Graph functions for individual controller
	DCPN003^	P.P.D. & Tenant Billing Management	Power Proportional Distribution and billing function for individual controller
	DCPN004	Real-time Energy Monitoring (R.E.M.)	Real Time Energy Display function for individual controller
	DCPN008	iTM Tenant Billing Management	Billing function for iTM Power Proportional Distribution data

^Smart Meter required.



## OPTIONAL ACCESSORIES (CONTINUED)

### OPTIONAL HARDWARE

Type	Model	Item	Specification
IAQ Sensor for Reiri	DCPE01S	IAQ Sensor AC	Detecting PM2.5, CO <sub>2</sub> , VOC, Temperature & RH, Modbus RS485 interface (100~240VAC Power Supply)
	DCPE02S	IAQ Sensor DC	Detecting PM2.5, CO <sub>2</sub> , VOC, Temperature & RH, Modbus RS485 interface (24VAC/VDC Power Supply)

### LOCALLY PROCURED MODULES

Type	Specification
WAGO I/O System	<p><b>Supported communication modules:</b> 750-362 750-862: for DALI module, Power measurement module</p> <p><b>System modules:</b> 750-600; 750-601; 750-602; 750-613; 753-620 (for DALI module)</p> <p><b>Supported IO modules:</b> Di: 750-400,430,432,436,1405 Do: 750-504, 513, 513/000-001, 1504 Ai: 750-454,455,459,479,460,460/000-003,460/000-005,461,461/000-003,461/000-004,461/000-005,461/020-000 Ao: 750-554,555,559,560 Pulse counter module*: 750-638 DALI: 753-647 Power measurement: 750-495</p> <p><b>Power supply:</b> 787-712; 787-1112</p> <p>*Use with 750-362 only. Not applicable with 750-862.</p>
Modbus Smart Meter	Schneider PM5300 / PM5110 / PM5500 / iEM3100 / iEM3200 series Kron Mult-K, Mult-K Plus, Mult-K 05, Mult-K 120

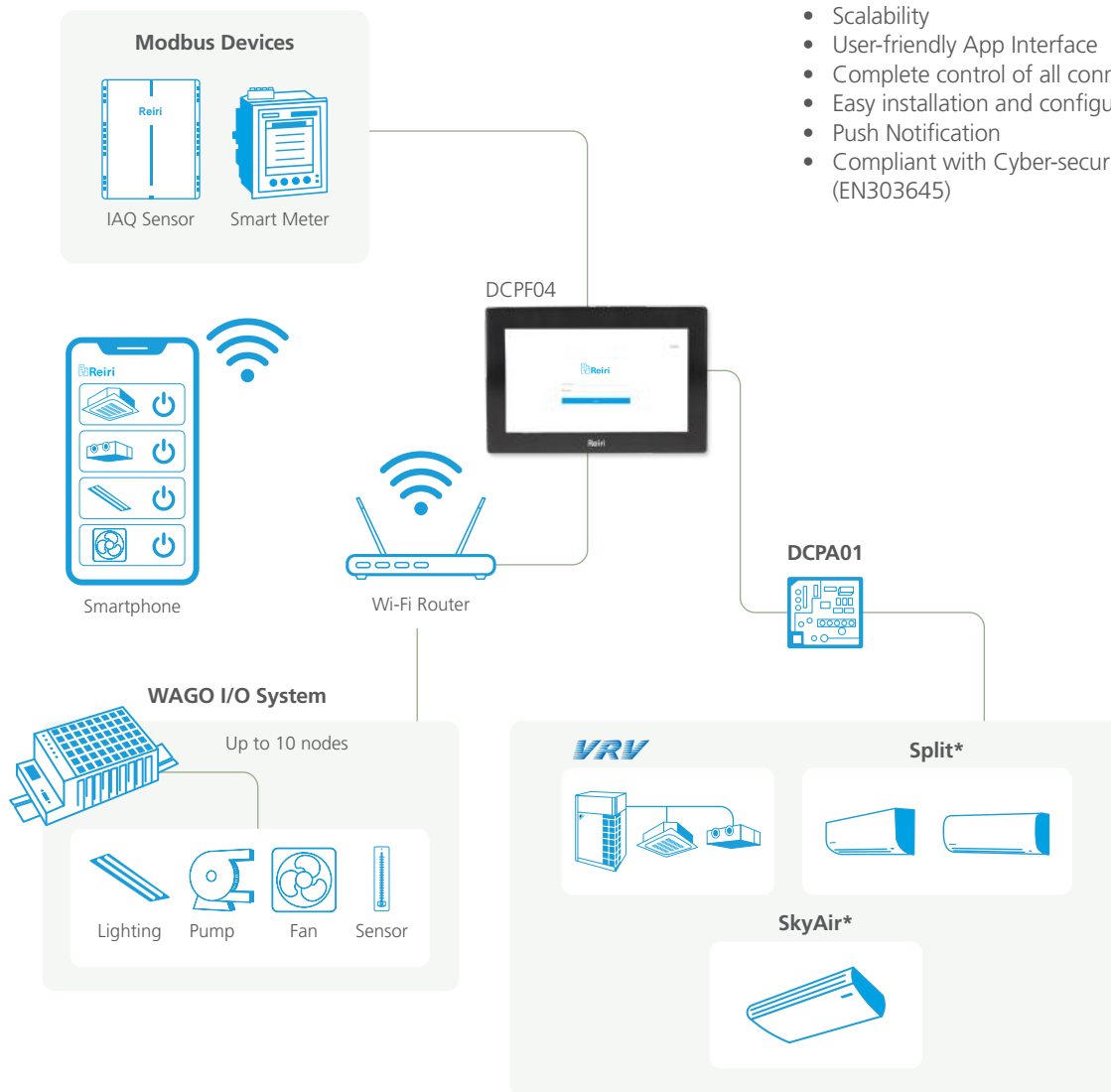
# Reiri for Office

## Touchscreen Controller

A simple office building solution with a secured, cloud-enabled platform and a dedicated touch panel.

### FEATURES

- Modern Touch Screen for Centralised Control
- Energy Management
- IAQ Management
- Mobile Control of Air-conditioning Units
- Automatic Control
- Scalability
- User-friendly App Interface
- Complete control of all connected devices
- Easy installation and configuration
- Push Notification
- Compliant with Cyber-security standard (EN303645)



\*Additional Interface Adaptors may be required

## SPECIFICATIONS (SOFTWARE)

Category	Functions	Description	
Monitoring and Control Functions	Management points	Maximum number of management point: 500	
	Groups	Maximum number of groups: 100	
	Monitoring Screen	Icon View	Icons show the operation status of equipment
		Layout View	Maximum 50 screen can be registered; Background image size should be less than 512kB
	Remote Control Prohibition	Individually prohibit operation of each local remote-control function	
Setpoint Range Limitation	To limit setpoint range for each indoor unit management point		
Automation Control Functions	Automatic changeover	Number of changeover groups: 100	
	Off Timer	Off timer duration can set from 5 mins to 12 hrs with every 5min interval	
	Setback	Setback setpoint can be selected within 24-35°C in cooling mode and 10-20°C in heating mode.	
	Scene	Number of programmes: 100 Up to 20 actions can be registered per pattern.	
	Schedule	Weekly Schedule	Up to 300 patterns (including yearly calendar) can be set.
		Yearly Calendar	A pattern set as special day calendar has higher priority than a pattern which is set as day of a week.
Interlock	Number of programmes: 100 Up to 10 management points can be registered as activation condition. The delay timer of execution condition can be set within 0-60 mins after the activation conditions are satisfied.		
Data Management	History	Management point operation, management point status change, management point error/alert message, function execution and system information are recorded for one year.	
	Report*	Operation data (latest information and operation report) and error report on daily/monthly basis.	
	Trend Graph*	Chart on the environmental changes (e.g. Temperature, Humidity or CO <sub>2</sub> levels) along different points of intervals (6h/12h/24h/48h/7 days/specific period within 7 days)	
	Energy Graph*	Bar chart on energy and other meter value, up to 4 energy categories excluding the recycled category.	
	Real Time Energy Display	Hourly/Daily/Monthly real time energy consumption status on screen.	
	IAQ Monitoring	To monitor the daily IAQ level (Temperature, Humidity, CO <sub>2</sub> , PM2.5, TVOC) in a room against the preset threshold. Up to 6 management points in 50 rooms each can be monitored.	
Multi-tenant Management <sup>^</sup>	Power Proportional Distribution (P.P.D.)*	Power Proportional Distribution results available at 60 min interval. Power consumption data for cooling and heating mode are available.	
	P.P.D. Billing	Generate Bill for individual tenants by using P.P.D. data, up to 256 tenants with maximum 256 indoor units registered under each tenant. Number of electricity price variation in a day: 5 time zones can be set with different currency. The system supports data output in CSV format, and printout function.	
System Setting	Account Management	Access through mobile application/ Windows App. Up to 80 accounts (Admin and User account) can be registered. Screens and operation accessible to general users can be restricted by admin account	
	Security	LAN communication: AES-128-CBC with RSA 2048 Internet communication: TLS 1.2 Account password storage: SHA256 hashing and AES-128-CBC together with other account information Device login password storage: AES-128-CBC	
	Supported languages	English, Spanish, Portuguese, Simplified Chinese, Traditional Chinese, Vietnamese, Bahasa (Indonesia), Thai	
	Notification	Push notification in cases: 1) Error/alert detected 2) Specified management point started 3) Version update messages	
	Email Alert	Malfunction Alert will be sent to preset email account	

\*The system supports data output in CSV format.

<sup>^</sup>Smart Meter required.

## OPTIONAL ACCESSORIES

### A/C CONNECTION HARDWARE

Type	Model	Item	Remarks
Controller	DCPF10	Reiri for Office (Multisite Extension)	Office Building Multisite Controller
A/C Connection Interface Adaptor	DCPA01	Adaptor for Reiri	Up to 64 indoor units can be managed
	BRP072B42	Daikin Mobile Controller Adaptor (for RA units)	For individual RA Indoor Unit
	BRP072C42	Daikin Mobile Controller Adaptor (for RA units)	For individual RA Indoor Unit
	BRP072C42-1	Daikin Mobile Controller Adaptor (for SA units)	For individual SA Indoor unit
	-	DAMA Interface Adaptor (NetPro Dual)	For individual DAMA AC unit

### OPTIONAL HARDWARE

Type	Model	Item	Specification
IAQ Sensor for Reiri	DCPE01S	IAQ Sensor AC	Detecting PM2.5, CO <sub>2</sub> , VOC, Temperature & RH, Modbus RS485 interface (100~240VAC Power Supply)
	DCPE02S	IAQ Sensor DC	Detecting PM2.5, CO <sub>2</sub> , VOC, Temperature & RH, Modbus RS485 interface (24VAC/VDC Power Supply)

### OPTIONAL SOFTWARE

Type	Model	Item	Remarks
Controller Software	DCPN003^	P.P.D. & Tenant Billing Management	Power Proportional Distribution and billing function for individual controller
	DCPN004	Real-time Energy Monitoring (R.E.M.)	Real Time Energy Display function for individual controller

^Smart Meter required.

### LOCALLY PROCURED MODULES

Type	Specification
WAGO I/O System	<p><b>Supported communication modules:</b> 750-362 750-862: for DALI module, Power measurement module</p> <p><b>System modules:</b> 750-600; 750-601; 750-602; 750-613; 753-620 (for DALI module)</p> <p><b>Supported IO modules:</b> Di: 750-400,430,432,436,1405 Do: 750-504, 513, 513/000-001, 1504 Ai: 750-454,455,459,479,460,460/000-003,460/000-005,461,461/000-003,461/000-004,461/000-005,461/020-000 Ao: 750-554,555,559,560 Pulse counter module*: 750-638 DALI: 753-647 Power measurement: 750-495</p> <p><b>Power supply:</b> 787-712; 787-1112</p> <p>*Use with 750-362 only. Not applicable with 750-862.</p>
Modbus Smart Meter	Schneider PM5300 / PM5110 / PM5500 / iEM3100 / iEM3200 series Kron Mult-K, Mult-K Plus, Mult-K 05, Mult-K 120

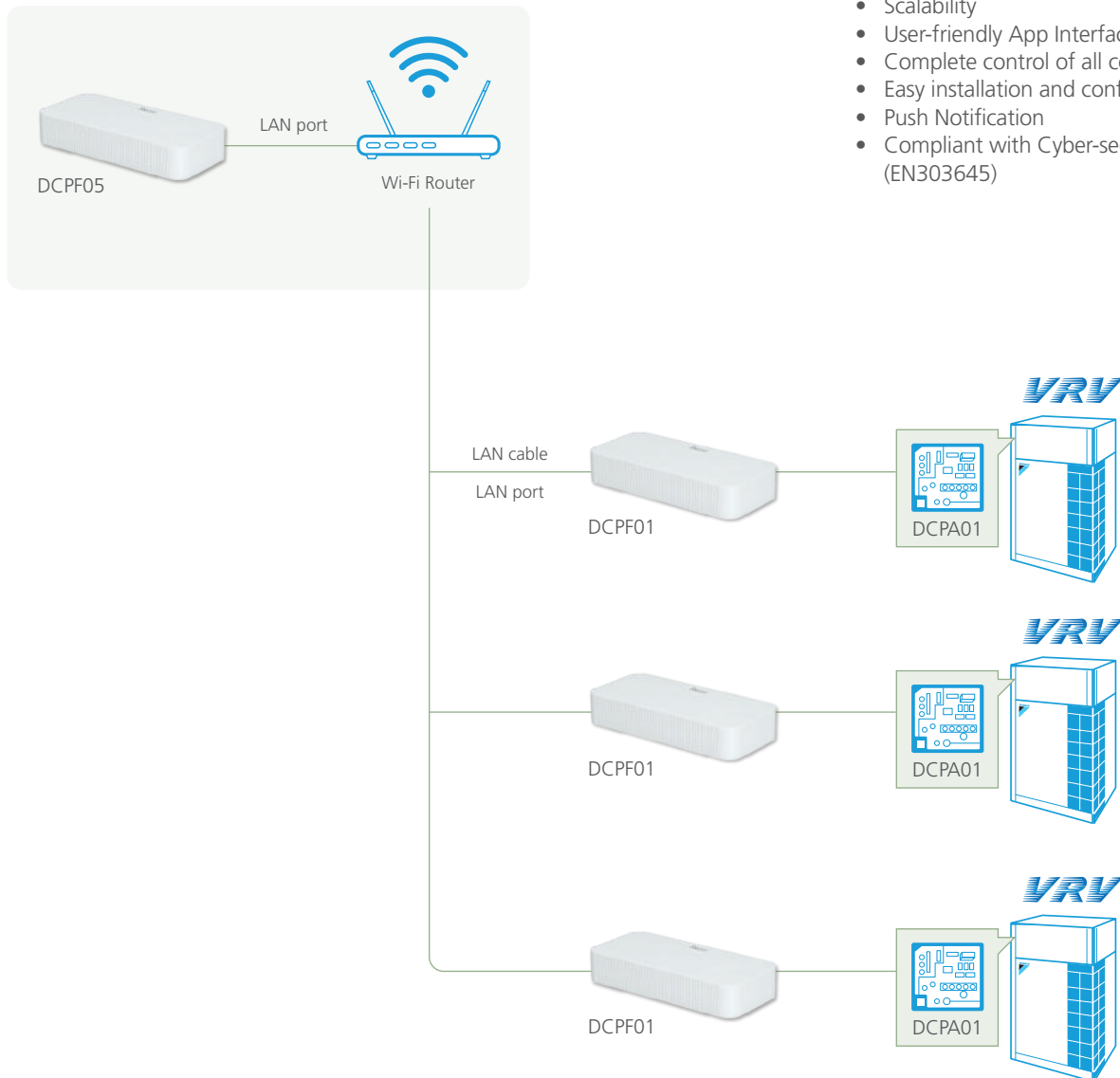
# Reiri for Office

## Controller Extension

A dedicated control solution for large scale office buildings through centralised control of multiple Reiri for Office controllers on a single secured and cloud-enabled platform.

### FEATURES

- Energy Management
- IAQ Management
- Mobile Control of Air-conditioning Units
- Automatic Control
- Scalability
- User-friendly App Interface
- Complete control of all connected devices
- Easy installation and configuration
- Push Notification
- Compliant with Cyber-security standard (EN303645)



### REQUIRED ACCESSORY

#### A/C CONNECTION HARDWARE

Type	Model	Item	Remarks
Controller	DCPF01	Reiri for Office	Office Building Controller

## SPECIFICATIONS (SOFTWARE)

Category	Functions	Description	
Monitoring and Control Functions	Management points	Maximum number of management point: 2500	
	Groups	Maximum number of groups: 500	
	Monitoring Screen	Icon View	Icons show the operation status of equipment
		Layout View	Maximum 100 screen can be registered; Background image size should be less than 512kB
	Remote Control Prohibition	Individually prohibit operation of each local remote-control function	
Setpoint Range Limitation	To limit setpoint range for each indoor unit management point		
Automation Control Functions	Automatic changeover	Number of changeover groups: 500	
	Off Timer	Off timer duration can set from 5 mins to 12 hrs with every 5min interval	
	Setback	Setback setpoint can be selected within 24-35°C in cooling mode and 10-20°C in heating mode.	
	Scene	Number of programmes: 500 Up to 20 actions can be registered per pattern.	
	Schedule	Weekly Schedule	Up to 300 patterns (including yearly calendar) can be set.
		Yearly Calendar	A pattern set as special day calendar has higher priority than a pattern which is set as day of a week.
Interlock	Number of programmes: 500 Up to 10 management points can be registered as activation condition. The delay timer of execution condition can be set within 0-60 mins after the activation conditions are satisfied.		
Data Management	History	Management point operation, management point status change, management point error/alert message, function execution and system information are recorded for one year.	
	Report*	Operation data (latest information and operation report) and error report on daily/monthly basis.	
	Trend Graph*	Chart on the environmental changes (e.g. Temperature, Humidity or CO <sub>2</sub> levels) along different points of intervals (6h/12h/24h/48h/7 days/specific period within 7 days)	
	Energy Graph*	Bar chart on energy and other meter value, up to 4 energy categories excluding the recycled category.	
	Real Time Energy Display	Hourly/Daily/Monthly real time energy consumption status on screen.	
IAQ Monitoring	To monitor the daily IAQ level (Temperature, Humidity, CO <sub>2</sub> , PM2.5, TVOC) in a room against the preset threshold. Up to 6 management points in 100 rooms each can be monitored.		
Multi-tenant Management <sup>^</sup>	Power Proportional Distribution (P.P.D.)*	Power Proportional Distribution results available at 60 min interval. Power consumption data for cooling and heating mode are available.	
	P.P.D. Billing	Generate Bill for individual tenants by using P.P.D. data, up to 500 tenants with maximum 256 indoor units registered under each tenant. Number of electricity price variation in a day: 5 time zones can be set with different currency. The system supports data output in CSV format, and printout function.	
System Setting	Account Management	Access through mobile application/ Windows App. Up to 200 accounts (Admin and User account) can be registered. Screens and operation accessible to general users can be restricted by admin account.	
	Security	LAN communication: AES-128-CBC with RSA 2048 Internet communication: TLS 1.2 Account password storage: SHA256 hashing and AES-128-CBC together with other account information Device login password storage: AES-128-CBC	
	Supported languages	English, Spanish, Portuguese, Simplified Chinese, Traditional Chinese, Vietnamese, Bahasa (Indonesia), Thai	
	Notification	Push notification in cases: 1) Error / alert detected 2) Specified management point started 3) Version update messages	
	Email Alert	Malfunction Alert will be sent to preset email account	

## OPTIONAL ACCESSORIES

### OPTIONAL SOFTWARE

Type	Model	Item	Remarks
Controller Software	DCPN003 <sup>^</sup>	P.P.D. & Tenant Billing Management	Power Proportional Distribution and billing function for individual controller
	DCPN004	Real-time Energy Monitoring (R.E.M.)	Real Time Energy Display function for individual controller

\*The system supports data output in CSV format.

<sup>^</sup>Smart Meter required.

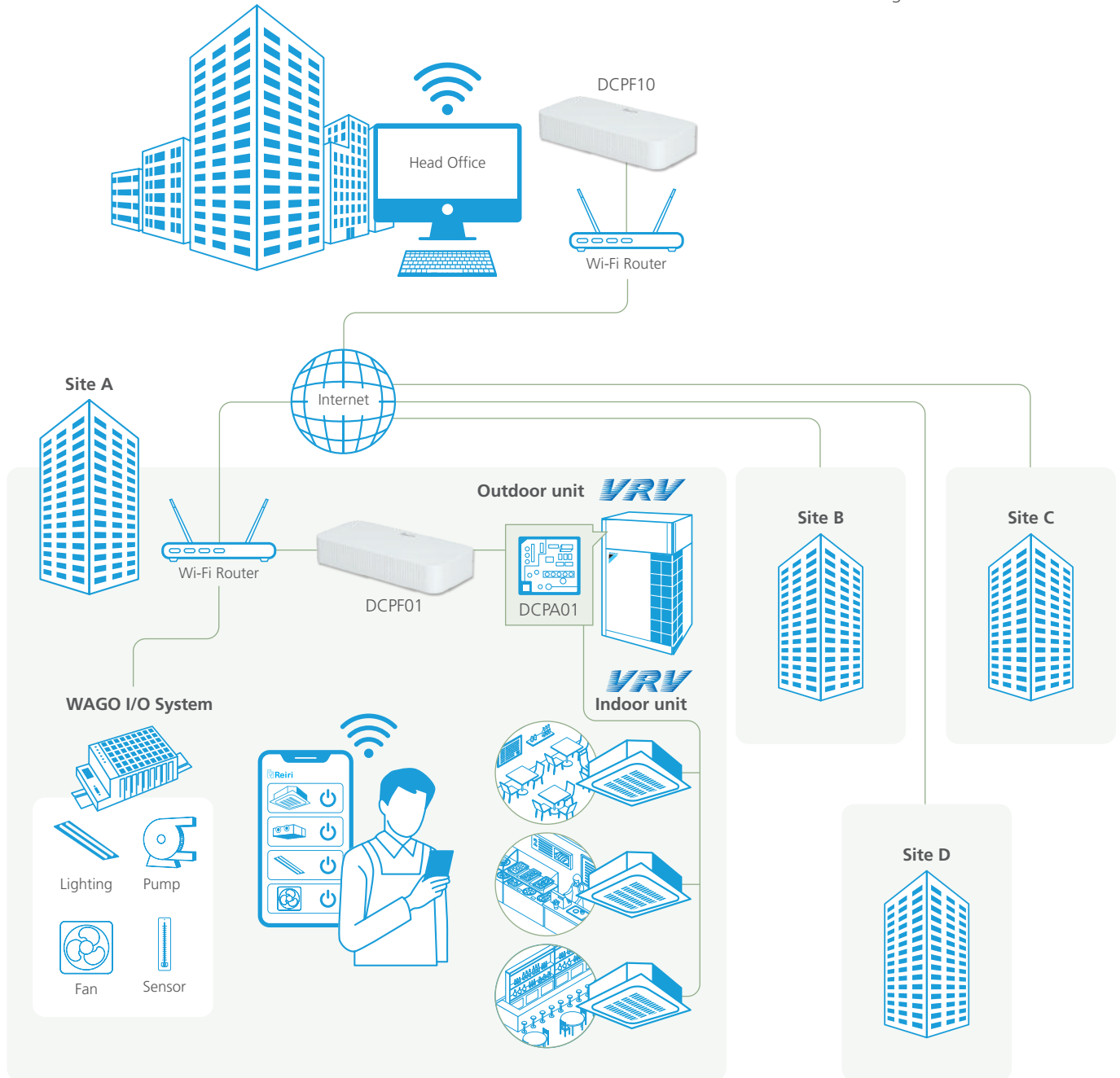
# Reiri for Office

## Multisite Extension

Centralised control and remote access for all devices in multiple buildings across different locations conveniently located on one secured platform.

### FEATURES

- Energy Management
- Compliant with Cyber-security standard (EN303645)
- Monitoring of multiple sites at one time
- Individual Management of each site



## SPECIFICATIONS (SOFTWARE)

Category	Functions	Description	
Monitoring and Control Functions	Management points	Maximum number of management point: 2500	
	Sites	Maximum number of sites: 400*	
	Groups	Maximum number of groups: 100 for each site	
	Monitoring Screen	Icon View	Icons show the operation status of equipment
		Layout View	Maximum 50 screen can be registered for each site; Background image size should be less than 512kB
	Remote Control Prohibition	Individually prohibit operation of each local remote-control function	
Setpoint Range Limitation	To limit setpoint range for each indoor unit management point		
Automation Control Functions	Automatic changeover	Number of changeover groups: 100 for each site	
	Off Timer	Off timer duration can set from 5 mins to 12 hrs with every 5min interval	
	Setback	Setback setpoint can be selected within 24-35°C in cooling mode and 10-20°C in heating mode.	
	Scene	Number of programmes: 100 for each site Up to 20 actions can be registered per pattern.	
	Schedule	Number of programmes: 100 for each site Up to 20 actions can be registered per pattern.	
		Weekly Schedule	Up to 300 patterns (including yearly calendar) can be set.
Yearly Calendar		A pattern set as special day calendar has higher priority than a pattern which is set as day of a week.	
Interlock	Number of programmes: 100 for each site Up to 10 management points can be registered as activation condition. The delay timer of execution condition can be set within 0-60 mins after the activation conditions are satisfied.		
Data Management	History	Management point operation, management point status change, management point error/alert message, function execution and system information for each site are recorded for one year.	
	Report*	Operation data (latest information and operation report) and error report for each site on daily/monthly basis.	
	Trend Graph*	Chart on the environmental changes for each site (e.g. Temperature, Humidity or CO <sub>2</sub> levels) along different points of intervals (6h/12h/24h/48h/7 days/specific period within 7 days).	
	Energy Graph*	Bar chart on energy and other meter value, up to 4 energy categories excluding the recycled category for each site.	
	Real Time Energy Display	Hourly/Daily/Monthly real time energy consumption status on screen for each site.	
	IAQ Monitoring	To monitor the daily IAQ level (Temperature, Humidity, CO <sub>2</sub> , PM2.5, TVOC) in a room against the preset threshold. Up to 6 management points in 50 rooms each can be monitored at each site.	
Multi-tenant Management <sup>^</sup>	Power Proportional Distribution (P.P.D.)*	Power Proportional Distribution results available at 60 min interval for each site. Power consumption data for cooling and heating mode are available.	
	P.P.D. Billing	Generate Bill for individual tenants by using P.P.D. data, up to 256 tenants with maximum 256 indoor units registered under each tenant for each site. Number of electricity price variation in a day: 5 time zones can be set with different currency. The system supports data output in CSV format, and printout function.	
System Setting	Account Management	Access through mobile application/ Windows App. Up to 200 accounts (Admin and User account) can be registered. Screens and operation accessible to general users can be restricted by admin account	
	Security	LAN communication: AES-128-CBC with RSA 2048 Internet communication: TLS 1.2 Account password storage: SHA256 hashing and AES-128-CBC together with other account information Device login password storage: AES-128-CBC	
	Supported languages	English, Spanish, Portuguese, Simplified Chinese, Traditional Chinese, Vietnamese, Bahasa (Indonesia), Thai	
	Notification	Push notification in cases: 1) Error/alert detected 2) Specified management point started 3) Version update messages	
	Email Alert	Malfunction Alert will be sent to preset email account	

\*The system supports data output in CSV format.

<sup>^</sup>Smart Meter required.

\*Only first 10 sites are free



## REQUIRED ACCESSORIES

### A/C CONNECTION HARDWARE

Type	Model	Item	Remarks
Controller	DCPF01	Reiri for Office	Office Building Controller
	DCPF04	Reiri for Office (Touchscreen Controller)	Office Building Touchscreen Controller
	DCPF05	Reiri for Office (Controller Extension)	Office Building Extension Controller

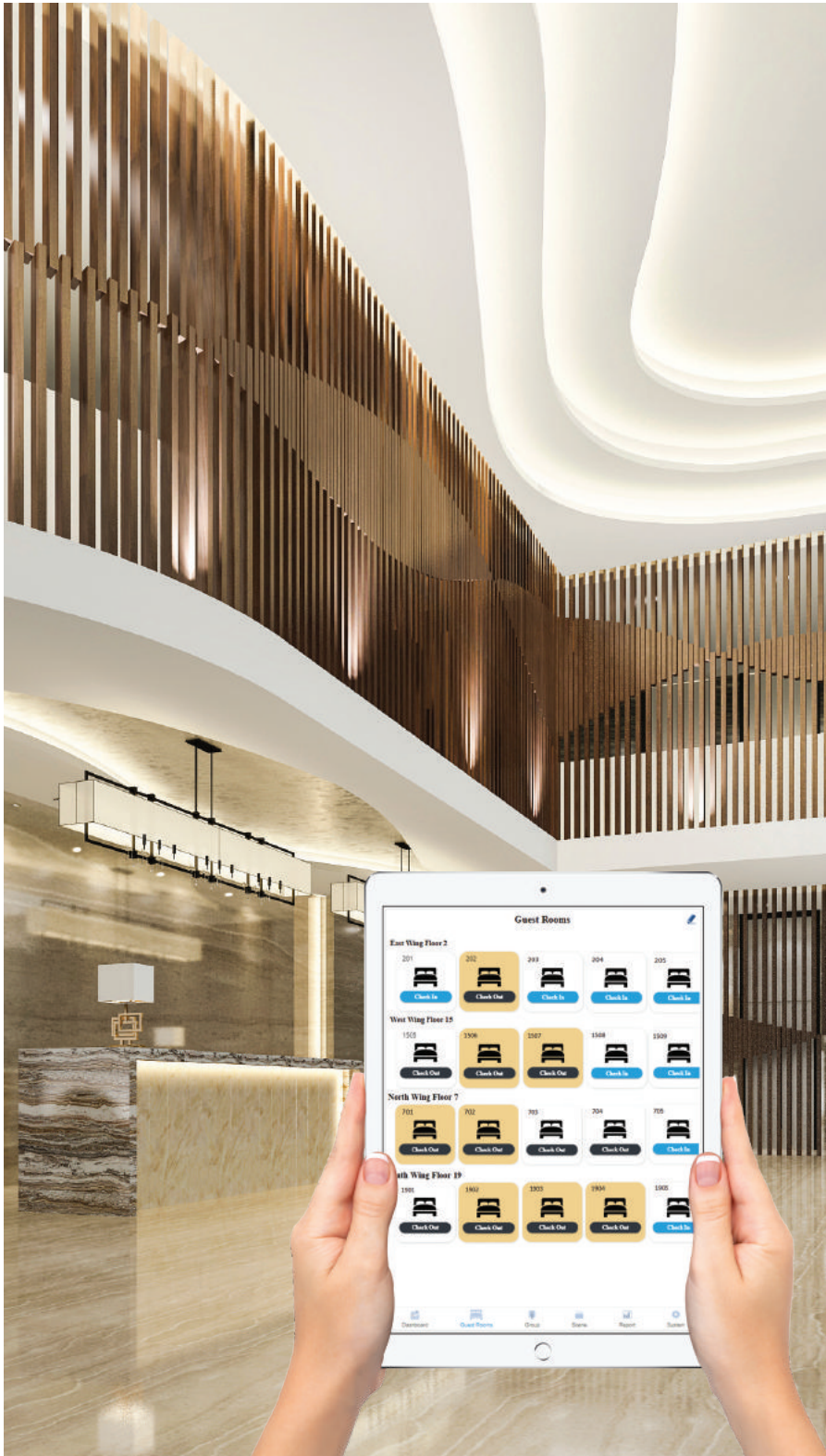
## OPTIONAL ACCESSORY

### OPTIONAL SOFTWARE

Type	Model	Item	Remarks
Controller Software	DCPN005	Multi-site Branch Expansion	To expand the multi-site control limit by 1 site



# Reiri for Hotel



Reiri for Hotel effectively saves energy and cost while prioritizing guests' comfort and satisfaction. With this smart hotel solution, energy consumption is optimised without compromising on the guests' in-room comfort. Hotel managers and staff are also able to conveniently monitor the status and manage the settings of every room.

## PRODUCT LINE-UP



**Reiri for Hotel**  
DCPL01



**Reiri for Resort**  
DCPR01

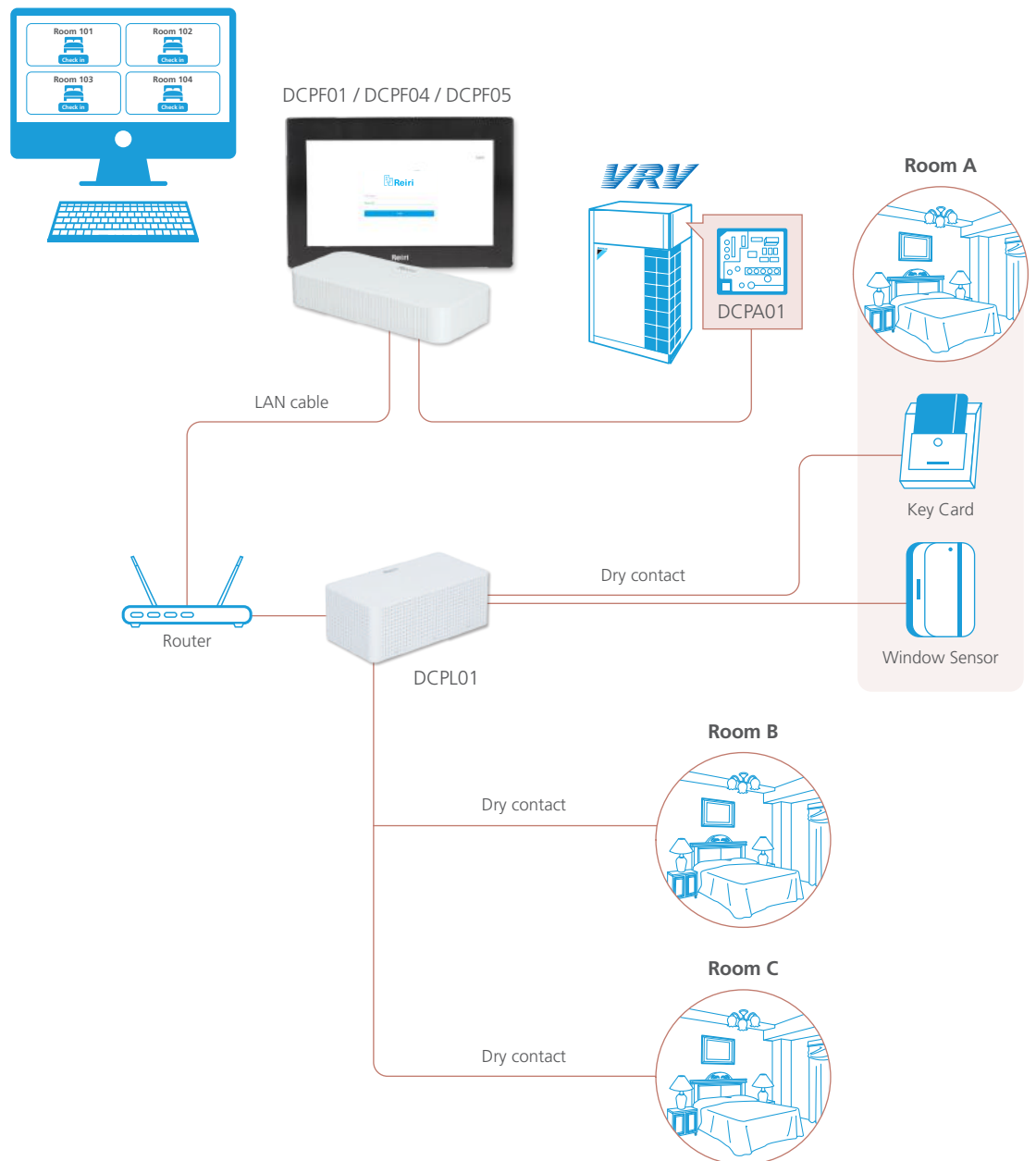


# Reiri for Hotel

Achieve the best of both worlds with this control solution that provides automatic aircon control to reduce energy consumption while ensuring an ideal level of comfort for guests in every room.

## FEATURES

- Guest Comfort
- Energy Management
- Easy installation and configuration
- Compliant with Cyber-security standard (EN303645)



## REQUIRED ACCESSORIES

### A/C CONNECTION HARDWARE

Type	Model	Item	Remarks
Controller	DCPF01	Reiri for Office	Office Building Controller
	DCPF04	Reiri for Office (Touchscreen Controller)	Office Building Touchscreen Controller
	DCPF05	Reiri for Office (Controller Extension)	Office Building Extension Controller

### SPECIFICATIONS (SOFTWARE)

Category	Functions	Description
Guestroom A/C Control	Remote Control Prohibition	Individually prohibit operation of each local remote-control function
	Automatic Changeover	Number of changeover groups: 5
	Setback	Setback setpoint can selected within 24-35°C in cooling mode and 10-20°C in heating mode.
	Guest room air-conditioner interlock	Air-conditioner is controlled based on guest room status such as rent/unrent, occupied/unoccupied and window open/close signal, up to 10 signals in total.
System Setting	Security	LAN communication: AES-128-CBC with RSA 2048 Internet communication: TLS 1.2 Account password storage: SHA256 hashing and AES-128-CBC together with other account information Device login password storage: AES-128-CBC
	Email Alert	Malfunction Alert will be sent to preset email account

## OPTIONAL ACCESSORIES

### A/C CONNECTION HARDWARE

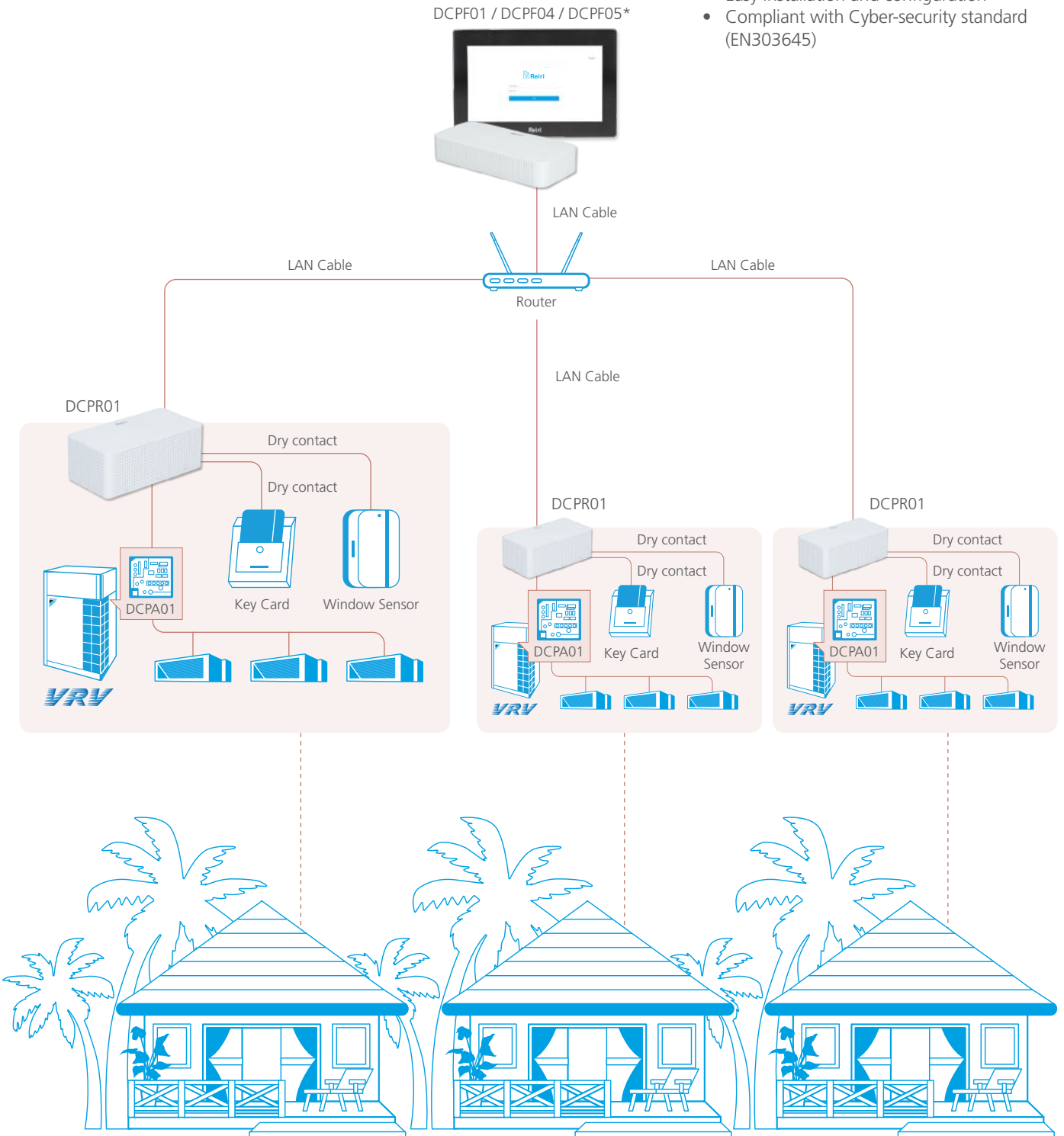
Type	Model	Item	Remarks
A/C Connection Interface Adaptor	BRP072B42	Daikin Mobile Controller Adaptor (for RA units)	For individual RA Indoor Unit
	BRP072C42	Daikin Mobile Controller Adaptor (for RA units)	For individual RA Indoor Unit
	BRP072C42-1	Daikin Mobile Controller Adaptor (for SA units)	For individual SA Indoor unit

# Reiri for Resort

Achieve the best of both worlds with this control solution that provides automatic aircon control to reduce energy consumption while ensuring an ideal level of comfort for guests in every villa/ resort.

## FEATURES

- Guest Comfort
- Energy Management
- Easy installation and configuration
- Compliant with Cyber-security standard (EN303645)



\*Optional if check in/out control is done by DCPF01 / DCPF04 / DCPF05.

## SPECIFICATIONS (SOFTWARE)

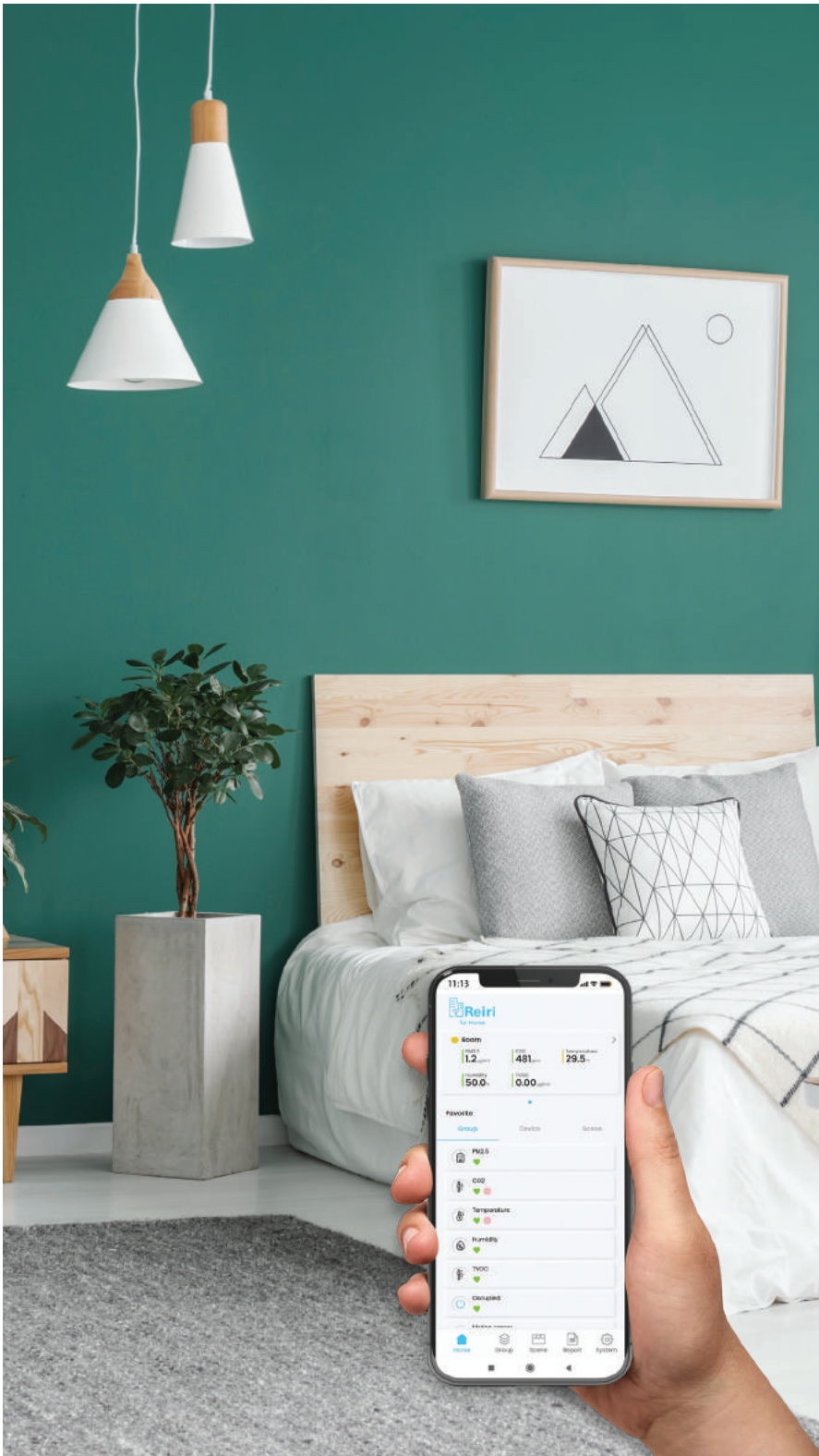
Category	Functions	Description
Guestroom A/C control	Management points	Maximum number of management point: 10
	Remote Control Prohibition	Individually prohibit operation of each local remote-control function
	Automatic changeover	Number of changeover groups: 5
	Setback	Setback setpoint can be selected within 24-35°C in cooling mode and 10-20°C in heating mode.
	Guest room air-conditioner interlock	Air-conditioner is controlled based on guest room status such as rent/unrent, occupied/unoccupied and window open/close signal, up to 10 signals in total.
System Setting	Security	LAN communication: AES-128-CBC with RSA 2048 Internet communication: TLS 1.2 Account password storage: SHA256 hashing and AES-128-CBC together with other account information Device login password storage: AES-128-CBC
	Email Alert	Malfunction Alert will be sent to preset email account

## OPTIONAL ACCESSORIES

### A/C CONNECTION HARDWARE

Type	Model	Item	Remarks
Controller	DCPF01	Reiri for Office	Office Building Controller
	DCPF04	Reiri for Office (Touchscreen Controller)	Office Building Touchscreen Controller
	DCPF05	Reiri for Office (Controller Extension)	Office Building Extension Controller
A/C Connection Interface Adaptor	DCPA01	Adaptor for Reiri	Up to 10 indoor units can be managed
	BRP072B42	Daikin Mobile Controller Adaptor (for RA units)	For individual RA Indoor Unit
	BRP072C42	Daikin Mobile Controller Adaptor (for RA units)	For individual RA Indoor Unit
	BRP072C42-1	Daikin Mobile Controller Adaptor (for SA units)	For individual SA Indoor unit
	-	DAMA Interface Adaptor (NetPro Dual)	For individual DAMA AC unit

# Reiri for Home



Reiri for Home is the complete smart home solution with seamless integration capabilities, allowing users to control and monitor all smart home devices conveniently from just a single mobile app. From security and safety enhancements to indoor air quality and energy management, Reiri for Home is the ideal home automation system for every homeowner.

## PRODUCT LINE-UP



**Reiri for Home**  
DCPH01



**Reiri for Home  
Lite Version**  
DCPH02





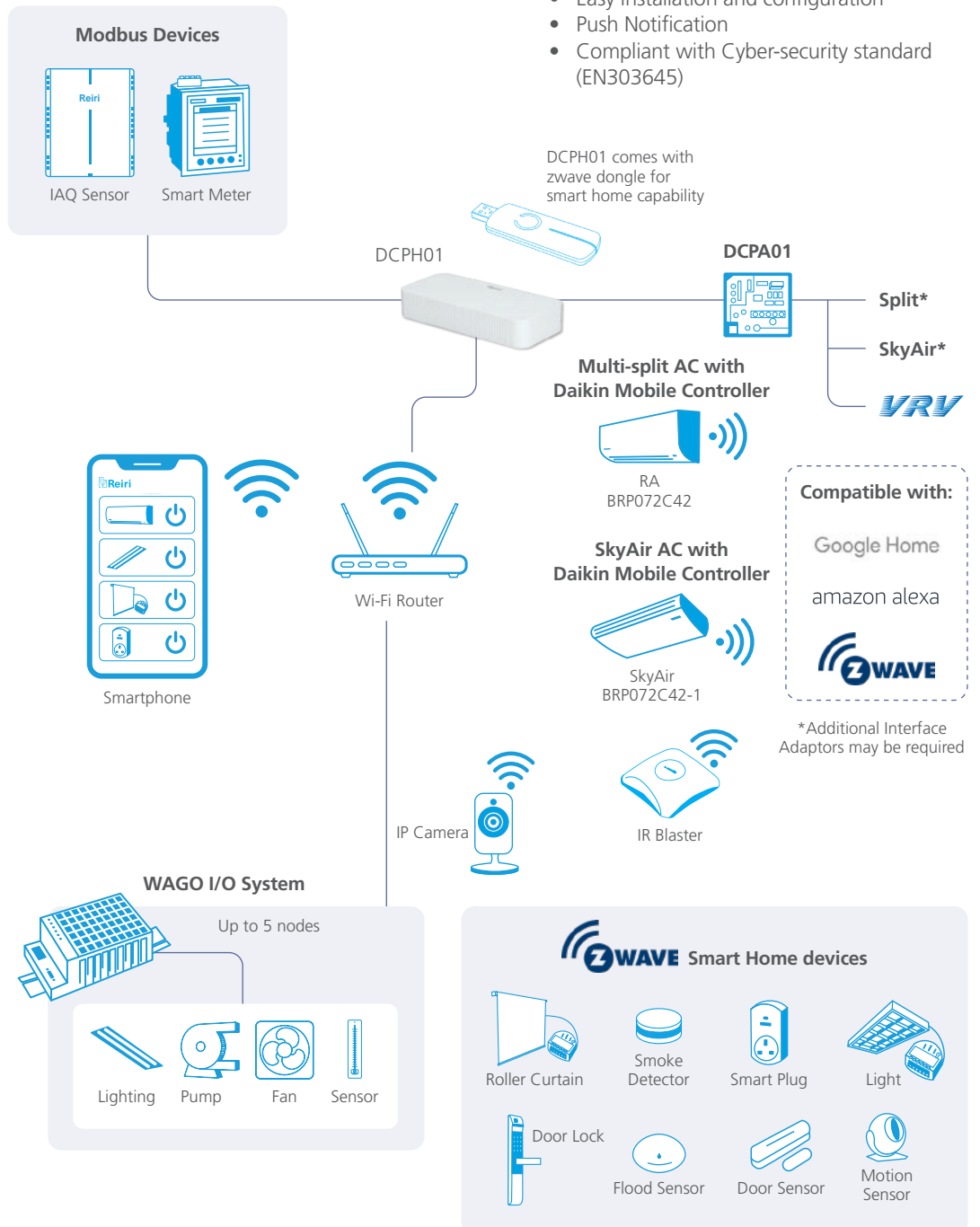
MAPPLETHORPE Perfection In Form  
ROBERT LONGO — CHARCOAL  
FOR SPACE 11000 — EXHIBITION 2014/15

# Reiri for Home

The complete smart home solution for every homeowner, with integration capabilities to allow ease and convenience of control for almost every smart device.

## FEATURES

- Convenience & Lifestyle
- Energy Management
- IAQ Management
- Home Security Solution
- Voice assistant enabled
- Mobile Control of Air-conditioning Units
- User-friendly App Interface
- Complete control of all connected devices
- Easy installation and configuration
- Push Notification
- Compliant with Cyber-security standard (EN303645)



## SPECIFICATIONS (SOFTWARE)

Category	Functions	Description	
Monitoring and Control Functions	Management points	Maximum number of management point: 100	
	Groups	Maximum number of groups: 30	
	Monitoring Screens	Icons show the operation status of equipment	
	Remote Control Prohibition	Individually prohibit operation of each local remote-control function	
	Setpoint Range Limitation	To limit setpoint range for each indoor unit management point	
	IP Camera Live View	IP camera live view up to 4 at a same time.	
Automation Control Functions	Automatic changeover	Number of changeover groups: 5	
	Off Timer	Off timer duration can set from 5 mins to 23 hrs 55 mins with every 5min interval	
	Setback	Setback setpoint can be selected within 24-35°C in cooling mode and 12-20°C in heating mode.	
	Scene	Number of programmes: 30 Up to 20 actions can be registered per pattern.	
		Schedule	Number of programmes: 30 Up to 20 actions can be registered per pattern.
	Weekly Schedule		Up to 50 patterns (including yearly calendar) can be set
Interlock	Number of programmes: 30 Up to 10 management points can be registered as activation condition. The delay timer of execution condition can be set within 0-60 mins after the activation conditions are satisfied.		
Data Management	History	Management point operation, management point status change, management point error/alert message, function execution and system information are recorded for one year.	
	Report*	Operation data (latest information and operation report) and error report on daily/monthly basis.	
	Trend Graph*	Chart on the environmental changes (e.g. Temperature, Humidity or CO <sub>2</sub> levels) along different points of intervals (6h/12h/24h/48h)	
	Energy Graph*	Bar chart on energy and other meter value, up to 4 energy categories excluding the recycled category.	
	IAQ Monitoring	To monitor the daily IAQ level (Temperature, Humidity, CO <sub>2</sub> , PM2.5, TVOC) in a room against the preset threshold. Up to 6 management points in 10 rooms each can be monitored.	
System Setting	Account Management	Access through mobile application/ Windows App. Up to 20 accounts (Admin and User account) can be registered. Screens and operation accessible to general users can be restricted by admin account	
	Security	LAN communication: AES-128-CBC with RSA 2048 Internet communication: TLS 1.2 Account password storage: SHA256 hashing and AES-128-CBC together with other account information Device login password storage: AES-128-CBC	
	Supported languages	English, Spanish, Portuguese, Simplified Chinese, Traditional Chinese, Vietnamese, Bahasa (Indonesia), Thai	
	Notification	Push notification in cases: 1) Error/alert detected 2) Specified management point started 3) Version update messages	
	Email Alert	Malfunction Alert will be sent to preset email account	

\*The system supports data output in CSV format.

## OPTIONAL ACCESSORIES

### A/C CONNECTION HARDWARE

Type	Model	Item	Remarks
A/C Connection Interface Adaptor	DCPA01	Adaptor for Reiri	Up to 64 indoor units can be managed
	BRP072B42	Daikin Mobile Controller Adaptor (for RA units)	For individual RA Indoor Unit
	BRP072C42	Daikin Mobile Controller Adaptor (for RA units)	For individual RA Indoor Unit
	BRP072C42-1	Daikin Mobile Controller Adaptor (for SA units)	For individual SA Indoor unit
	-	DAMA Interface Adaptor (NetPro Dual)	For individual DAMA AC unit

### OPTIONAL HARDWARE

Type	Specification
IAQ Sensor for Reiri	DCPE01S (IAQ Sensor AC) DCPE02S (IAQ Sensor DC)
Smart Home Z-wave Devices (Fibaro)	Dimmer 2: FGD-212 Flood Sensor: FGFS-101 Smoke Sensor: FGSD-002 CO Sensor: FGCD-001 Single Switch 2: FGS-213 Double Switch 2: FGS-223 Smart Module : FGS-214 Double Smart Module: FGS-224 Roller Shutter 3: FGR-223 RGBW Controller: FGRGBW-442 Door/Window Sensor: FGDW-002 Motion Sensor:FGMS-001 Smart Plug: FGWPG-111 Smart Implant:FGBS-222 The Button: FGPB-101

## OPTIONAL SOFTWARE

Type	Model	Item	Remarks
Controller Software	DCPN006	Residential Automatic Control	Setback, Setpoint Range, Remote Control Prohibition, Automatic Changeover functions for individual controller
	DCPN007	Residential System Report	Operation Report, Error Report functions for individual controller

## LOCALLY PROCURED MODULES

Type	Specification
WAGO I/O System	<p><b>Supported communication modules:</b> 750-362 750-862: for DALI module, Power measurement module</p> <p><b>System modules:</b> 750-600; 750-601; 750-602; 750-613; 753-620 (for DALI module)</p> <p><b>Power supply:</b> 787-712; 787-1112</p> <p><b>Supported IO modules:</b> Di: 750-400,430,432,436,1405 Do: 750-504, 513, 513/000-001, 1504 Ai: 750-454,455,459,479,460,460/000-003,460/000-005,461,461/000-003,461/000-004,461/000-005,461/020-000 Ao: 750-554,555,559,560 Pulse counter module*: 750-638 DALI: 753-647 Power measurement: 750-495</p> <p>*Use with 750-362 only. Not applicable with 750-862.</p>
Modbus Smart Meter	Schneider PM5300 / PM5110 / PM5500 / iEM3100 / iEM3200 series Kron Mult-K, Mult-K Plus, Mult-K 05, Mult-K 120
Smart Home Z-wave Devices (Other Brands)	Aeotec: Nano Dimmer (ZW111), Nano Switch (ZW139), Door/Window Sensor 7 Pro (ZWA012), Tri Sensor (ZWA005), Home Energy Meter Gen5 (ZW095), Smart Switch 6 (ZW096) MCO Home: PM2.5 Monitor (MH10-PM2.5-WD), Multi-Sensor (A8-7/A8-9), Smart Plug (PS-UK) Popp Smoke Sensor (Ei650) Yale Digital Door Lock (models supporting Security 2 DSK (zws2dsk)) Samsung Digital Door Lock (models supporting HMDM-100)
IP Cameras	D-Link: DCS-F4602 (dome 2MP), DCS-F4702 (bullet 2MP), DCS-F4604 (dome 4MP), DCS-F4704 (bullet 4MP) [All Hardware Version B] Imou: IPC-C22EP - Cue 2; IPC-C22SP- Cue 2E-D
IR Blaster	BroadLink RM4 Pro

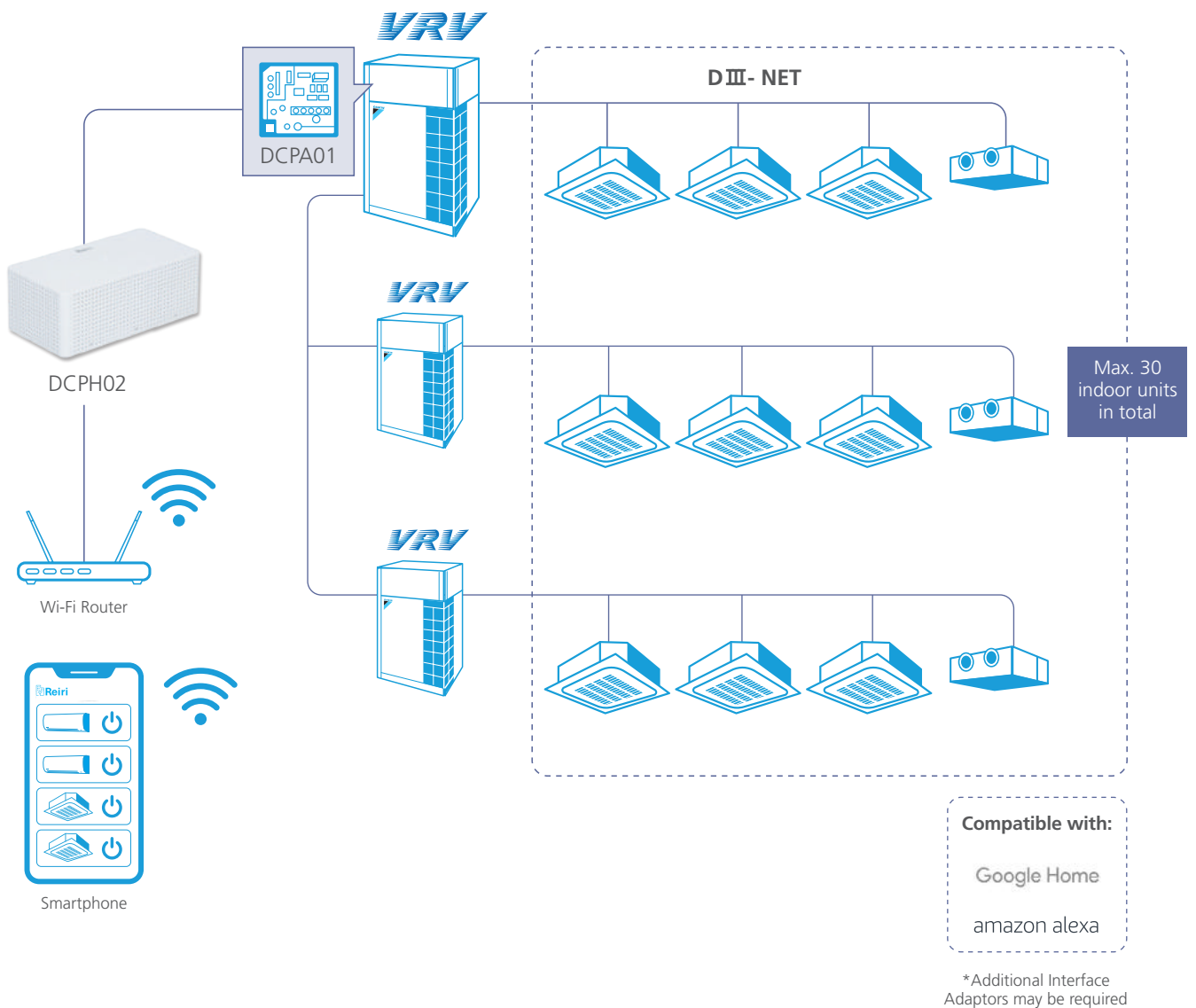
# Reiri for Home

## Lite Version

The best smart air-conditioner controller for homeowners to achieve maximum comfort and energy savings.

### FEATURES

- User-friendly App Interface
- Complete control of all air-conditioners
- Easy installation and configuration
- Push Notification
- Compliant with Cyber-security standard (EN303645)



## SPECIFICATIONS (SOFTWARE)

Category	Functions	Description
Monitoring and Control Functions	Management points	Maximum number of management point: 30
	Groups	Maximum number of groups: 5
	Monitoring Screens	Icons show the operation status of equipment
	Remote Control Prohibition	Individually prohibit operation of each local remote-control function
	Setpoint Range Limitation	To limit setpoint range for each indoor unit management point
Automation Control Functions	Automatic changeover	Number of changeover groups: 5
	Off Timer	Off timer duration can set from 5 mins to 23 hrs 55 mins with every 5min interval
	Setback	Setback setpoint can be selected within 24-35°C in cooling mode and 12-20°C in heating mode.
	Schedule	Number of programmes: 10 Up to 20 actions can be registered per pattern. Weekly Schedule   Up to 10 patterns (including yearly calendar) can be set.
Data Management	History	Management point operation, management point status change, management point error/alert message, function execution and system information are recorded for one year.
	Report*	Operation data (latest information and operation report) and error report on daily/monthly basis.
System Setting	Account Management	Access through mobile application/ Windows App. Up to 10 accounts (Admin and User account) can be registered. Screens and operation accessible to general users can be restricted by admin account.
	Security	LAN communication: AES-128-CBC with RSA 2048 Internet communication: TLS 1.2 Account password storage: SHA256 hashing and AES-128-CBC together with other account information Device login password storage: AES-128-CBC
	Supported languages	English, Spanish, Portuguese, Simplified Chinese, Traditional Chinese, Vietnamese, Bahasa (Indonesia), Thai
	Notification	Push notification in cases: 1) Error/alert detected 2) Specified management point started 3) Version update messages
	Email Alert	Malfunction Alert will be sent to preset email account

\*The system supports data output in CSV format.

## OPTIONAL ACCESSORIES

### A/C CONNECTION HARDWARE

Type	Model	Item	Remarks
A/C Connection Interface Adaptor	DCPA01	Adaptor for Reiri	Up to 30 indoor units can be managed
	BRP072B42	Daikin Mobile Controller Adaptor (for RA units)	For individual RA Indoor Unit
	BRP072C42	Daikin Mobile Controller Adaptor (for RA units)	For individual RA Indoor Unit
	BRP072C42-1	Daikin Mobile Controller Adaptor (for SA units)	For individual SA Indoor unit
	-	DAMA Interface Adaptor (NetPro Dual)	For individual DAMA AC unit

### OPTIONAL SOFTWARE

Type	Model	Item	Remarks
Controller Software	DCPN006	Residential Automatic Control	Setback, Setpoint Range, Remote Control Prohibition, Automatic Changeover functions for individual controller
	DCPN007	Residential System Report	Operation Report, Error Report functions for individual controller

## Daikin Holdings Singapore Pte Ltd

📍 ADDRESS

10 Ang Mo Kio Industrial Park 2,  
Singapore 569501

☎ MAIN LINE

6583 8888

@ EMAIL

| [dhos.support@daikin.com.sg](mailto:dhos.support@daikin.com.sg)

